

Working Together to Transform Cancer Care



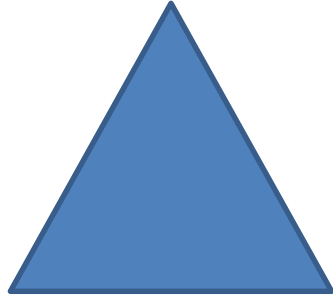
Health Systems Alignment for a Common Goal

Danielle Hubbard

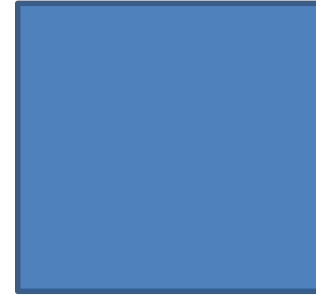
Project Manager, UT Southwestern Medical Center

March 31, 2017

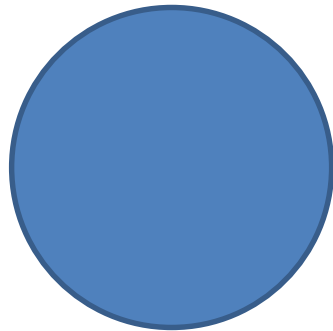
Personality Test



Bold & Confident



Detail-Oriented



Team Players



Objectives

- I. Recognize differences between UT Southwestern Medical Center and Parkland Health and Hospital System
- II. Describe the processes and resources necessary to implement multi-institutional care transformation initiatives for the Oncology Care Model (OCM)
- III. Identify lessons learned from the first OCM Performance Period

Parkland & UTSW

Parkland

- Dallas County Public Hospital
- Serves primarily low-income and indigent patients
- 20 Community-Based Clinics
- Numerous Outreach and Education Programs
- Access to UTSW Clinical Trials Program
- 100% of Cancer Physicians are UTSW Faculty

UTSW

- NCI Designated Comprehensive Cancer Center (2015)
- Serves primarily private-pay and Medicare patients
- 3 Outpatient Cancer Clinics
- Embedded Supportive Care Programs, Palliative Care, Pain Management, Rehabilitation
- Integrated Clinical Trials Program
- Robust Pharmacy Services (Retail and Specialty)

Dallas–Fort Worth, TX Metropolitan Statistical Area¹

7.1 million people

- Urban core surrounded by large rural population
 - 47% Non-Hispanic White
 - 29% Hispanic
 - 15% Non-Hispanic Black
 - 25-33% uninsured

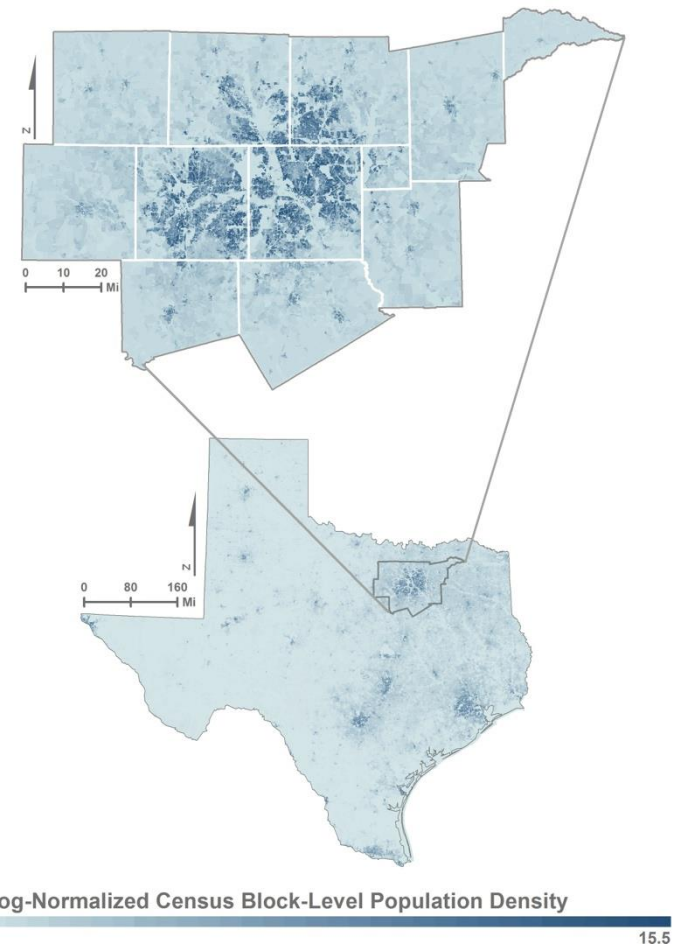
Late stage diagnoses exceed national rates

- Breast
- Colon
- Lung

Cancer mortality exceeds national rates

- Cervical
- Hepatocellular
- Kidney

¹12 counties including Dallas and Tarrant, as designated by the US Office of Management and Budget



Cancer Care at Parkland & UTSW

Parkland

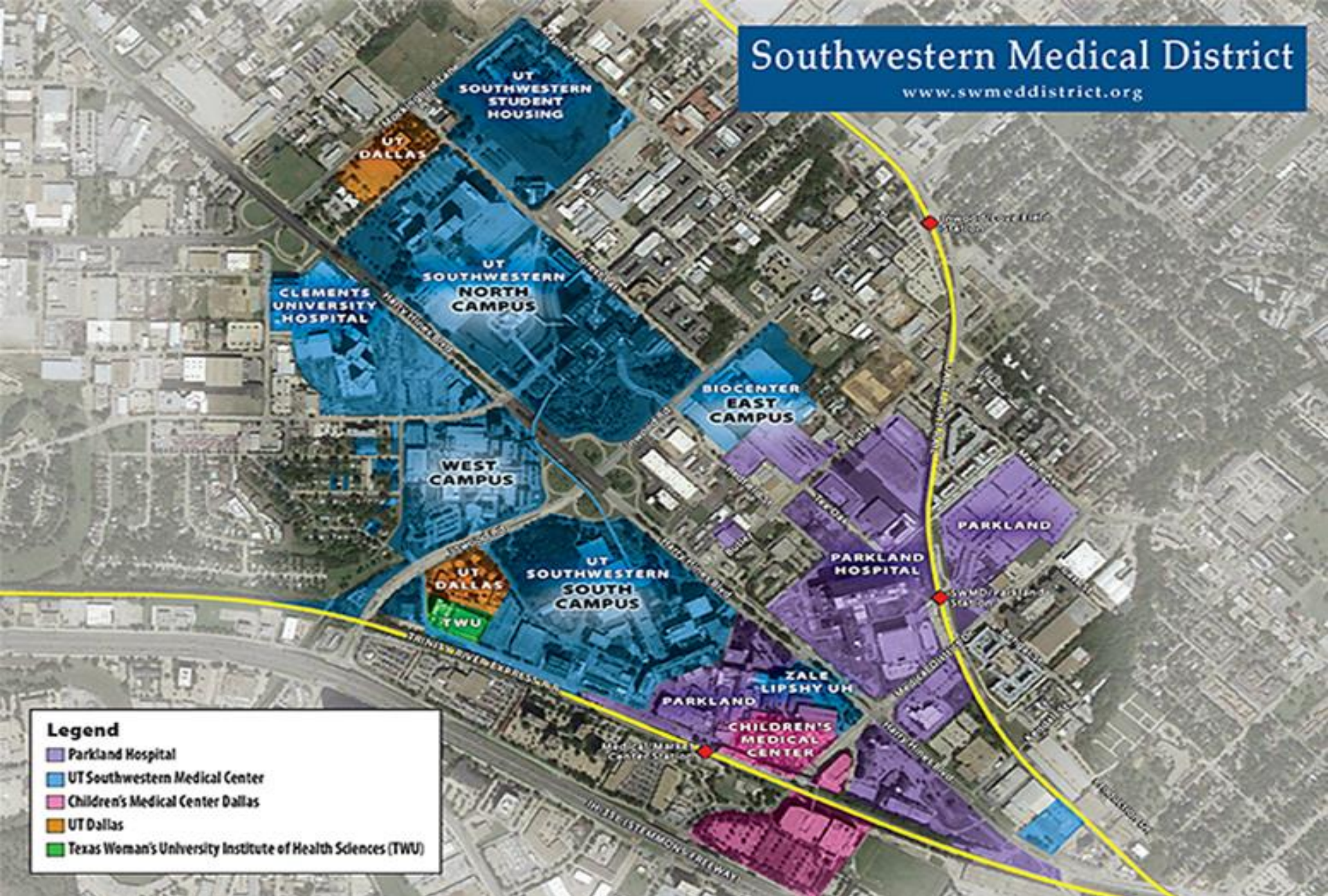
- ~ 2,355 new cancer cases/year
- Cancer Care is organized in multi-disciplinary clinics, focused on type of cancer
- 28 bed inpatient unit
- 48 Infusion Chairs
- Outpatient services provided at 1 location
- Patients have higher acuity (delayed care, with more advanced cancers)

UTSW

- ~ 5,000 new cancer cases/year
- Cancer Care is organized in multi-disciplinary clinics, focused on type of cancer
- 64 bed inpatient unit in Clements University Hospital
- 90 Infusion Chairs
- Outpatient services provided at 3 locations
- Patients with late-stage disease often exceed the national average

Southwestern Medical District

www.swmeddistrict.org



Legend

- Parkland Hospital
- UT Southwestern Medical Center
- Children's Medical Center Dallas
- UT Dallas
- Texas Woman's University Institute of Health Sciences (TWU)

The Oncology Care Model at UTSW and PHHS

Coordination and implementation of OCM across multiple organizations is complex and challenging --- it requires leadership engagement, a well defined plan of action and consistent communication

- Governance from Executive Leadership
- Program Administration – Care Partner Agreements
- Funds Flow – billing (MEOS), resource determination and allocation
- Alignment of EHR build, documentation, reporting (EPIC)
- Project Management alignment
- Practice Transformation
- Data Analytics
- Care Coordination

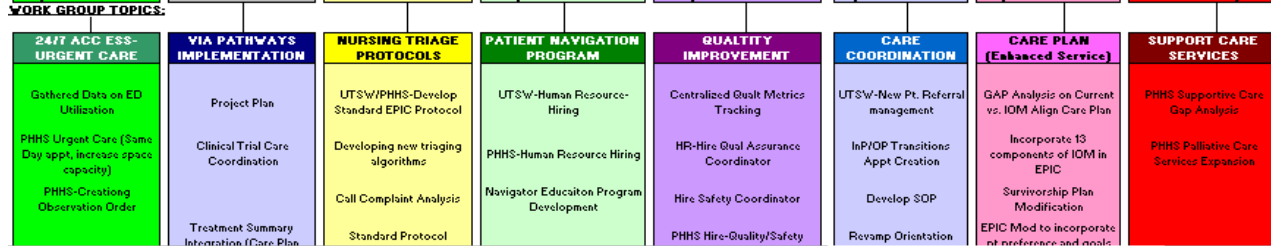
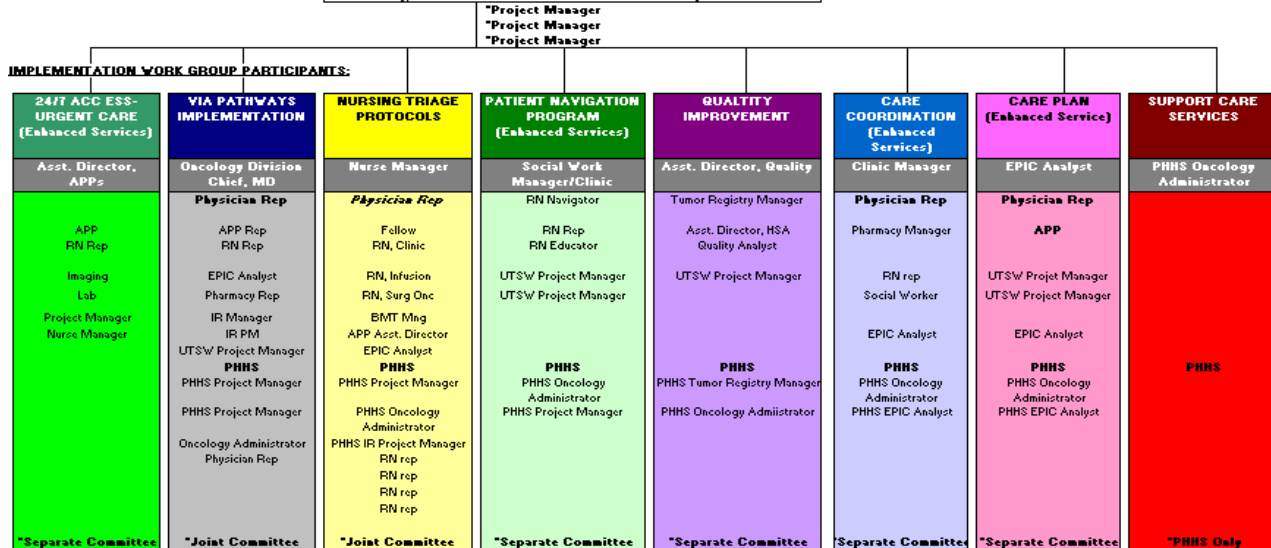
Collaborative Implementation Structure and Program Oversight



Harold C. Simmons Comprehensive Cancer Center
ONCOLOGY MODEL OF CARE TRANSFORMATION

ONCOLOGY CARE MODEL EXECUTIVE COMMITTEE		
UTSW President/CEO	UTSW CMD	PHHS President
UTSW COO	UTSW VP	PHHS Chairma
UTSW EVP	UTSW AVP	

ONCOLOGY CARE MODEL TRANSFORMATION IMPLEMENTATION COMMITTEE	
PHHS Oncology Division Chief	UTSW Oncology Division Chief
PHHS Oncology Administrator	UTSW AVP Cancer Programs



OCM Practice Transformation

Alignment of key resources enable collaborative efforts

- Administration
 - Meets weekly; reports progress and barriers to Executive Committee; works with leaders of focus groups to drive outcomes
- Information Resources
 - Access to each organizations EPIC test environment
 - Same EPIC Corporate Analyst
- Data Analytics and Tumor Registry Teams
 - Assure consistent data abstraction/fields and that timelines are met
- Pharmacy
 - Alignment of Clinical Pathways implementation and formularies
- Project Management
 - Utilize SharePoint to create transparent, comprehensive source of information related to the program
 - Align project management teams within both organizations, utilize same templates, etc.

OCM SharePoint UTSW and PHHS

Oncology Care Model Collaborative - UTSW/PHHS

- Home
- Recent
 - C. OCM Contract/Participant Application Files
 - B. Mtg Min & Notes: Administrative Meetings
 - Oncology Care Model Collaborative
 - 4. Quality Measures (PBP) Workgroup
 - A. Training/Webinar Material
 - 2. Data & Reports
 - 1. OCM Administrative Files
- Pages
- Site Contents
- Recycle Bin



Newsfeed

Start a conversation

It's pretty quiet here. Invite more people to the site, or start a conversation.

Oncology Care Model Collaborative

February 2017

SUNDAY	MONDAY	TUESDAY	WEDNESDAY	THURSDAY	FRIDAY	SATURDAY
29	30 1:00 pm - 2:00 pm OCM EPIC Registry	31 3:00 pm - 4:00 pm OCM EHR Vendor Workgroup	1 8:30 am Via Pathways UTSW Weekly Touch Base 9:00 am UTSW/PHHS Cancer Center Program Update 2:00 pm OCM Practice Transformation Update - Car	2 2:00 pm OCM Webinar: Data Registry Training Sessio 3:00 pm OCM Quality Update (Tumor Registry)	3 8:00 am UTSW/PHHS Review Redesign Activities - U 9:00 am AAMC/DataGen OCM Demonstration 1:00 pm EPIC Oncology Medical District Integration	4
5	6 8:00 am - 9:00 am OCM EPIC Update Meeting	7	8 8:00 am OCM QA Presentation PHHS for GYN OCM 8:30 am Via Pathways UTSW Weekly Touch Base 11:30 am OCM Time & Motion Study	9 11:00 am OCM Time & Motion Prep 12:00 pm OCM Quality Metrics Workgroup (UTSW/P	10 9:00 am - 10:00 am UTSW/PHHS OCM Committee Meeting	11
12	13	14 1:00 pm OCM Time & Motion Prep 3:00 pm OCM EHR Vendor Workgroup	15 8:30 am Via Pathways UTSW Weekly Touch Base 9:00 am UTSW/PHHS Cancer Center Program Update 2:00 pm OCM Practice Transformation Update - Car = 1 more item	16 2:00 pm OCM Data Registry Office Hours 3:00 pm OCM Quality Update (Tumor Registry)	17 8:00 am - 9:00 am UTSW/PHHS Review Redesign Activities - Update	18
19	20 8:00 am - 9:00 am OCM EPIC Update Meeting	21 1:00 pm - 2:00 pm OCM Metrics	22 8:30 am Via Pathways UTSW Weekly Touch Base 10:00 am OCM Registry Reports 11:30 am Tuple Health/UTSW Site Visit = 1 more item	23 12:00 pm OCM Quality Metrics Workgroup (UTSW/P 2:00 pm OCM Defining Episodes and Total Cost of C 3:00 pm OCM EHR Vendor Workgroup	24 6:30 am OCM Staff Presentation 8:00 am UTSW/PHHS Review Redesign Activities - U 9:00 am UTSW/PHHS OCM Committee Meeting	25
26	27 3:00 pm - 4:00 pm OCM Staff Presentation	28 OCM Quality Measures DUE (OCM Data Registry) 10:30 am - 11:30 am OCM Staff Presentation	1 8:30 am Via Pathways UTSW Weekly Touch Base 9:00 am UTSW/PHHS Cancer Center Program Update 10:30 am OCM Resource Need = 1 more item	2 2:00 pm OCM Webinar: Data Registry Training Sessio 3:00 pm OCM Quality Update (Tumor Registry)	3 8:00 am UTSW/PHHS Review Redesign Activities - U 1:00 pm EPIC Oncology Medical District Integration	4

CONTACTS for the OCM Program - UTSW & PHHS

OCM UTSW-PHHS Contacts.xlsx

QUICK LINKS

CMS Oncology Care Model Website
OCM Connect

OCM Frequently Asked Questions (Most Recent Version)

OCM_FAQ_12.pdf

OCM Lessons Learned

- Executive-level buy-in from all key stakeholders is essential
- Physician Leadership engagement and ownership at all levels is required to ensure success
- Don't underestimate time and resource requirements
- Academic Medical Center >10,000 employees = delays
- Identify funds flow between organizations as soon as possible
- Alignment of individual institution resources
- Invest in time to educate staff and faculty of the program requirements and impact to their daily duties
- Communication is key!

OCM Communication

QUICK TIP---2017

THE ONCOLOGY CARE MODEL (OCM)
Preparedness

—Program—

What is OCM...?

- A new oncology delivery model from the Centers for Medicare & Medicaid Innovation (CMMI)
- It aims to increase the efficiency and effectiveness of care, and to provide higher quality, more highly coordinated care for patients receiving chemotherapy
- 5-year program that began on July 1, 2016
- UTSW SCCC and Parkland (PHHS) partnered for this program
- 190 oncology practices from around the United States were chosen for participation

Questions?

Thank you for your time and
attention!