



Developing a COVID-19 Recovery Plan

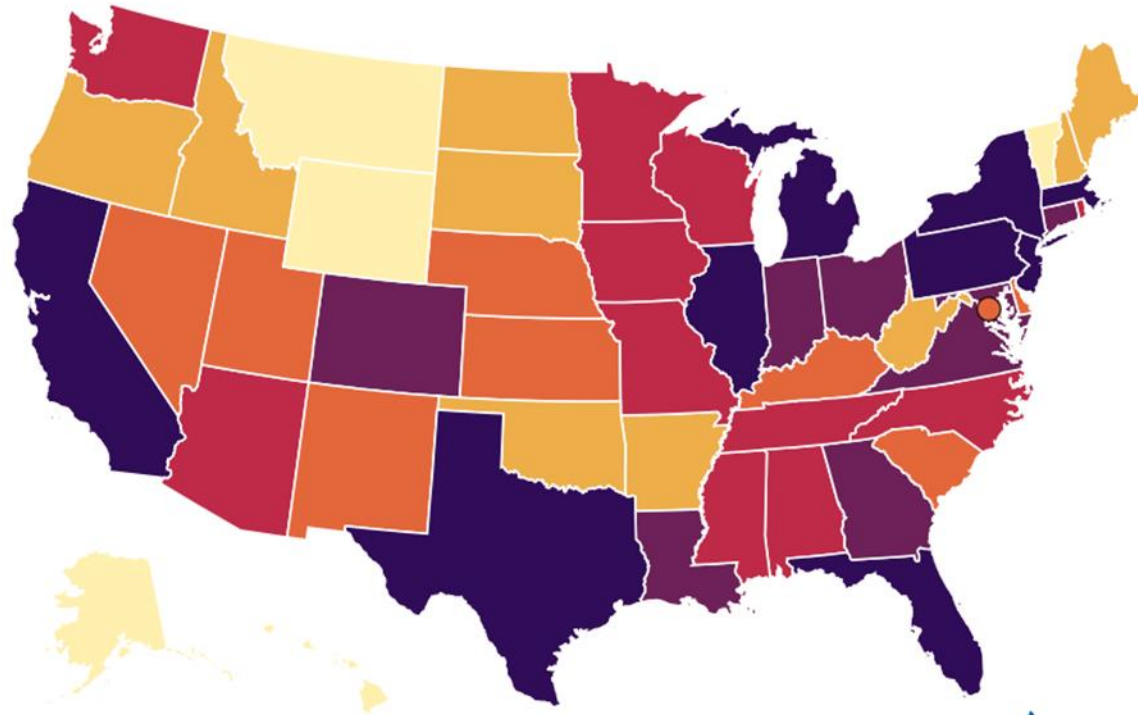
Friday, May 15, 2020

Jennie R. Crews, MD, MMM, FACP
Medical Director, Research Integration and SCCA Network
Seattle Cancer Care Alliance

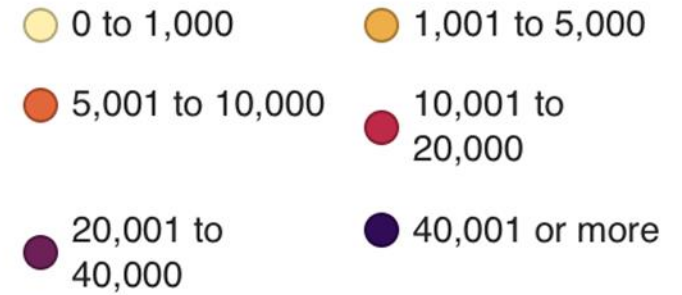


This webcast is supported by educational grants from AstraZeneca Pharmaceuticals, Merck & Co., and Pfizer, Inc.

State to State Variability in Cases



Reported Cases



AS

GU

MH

FM

MP

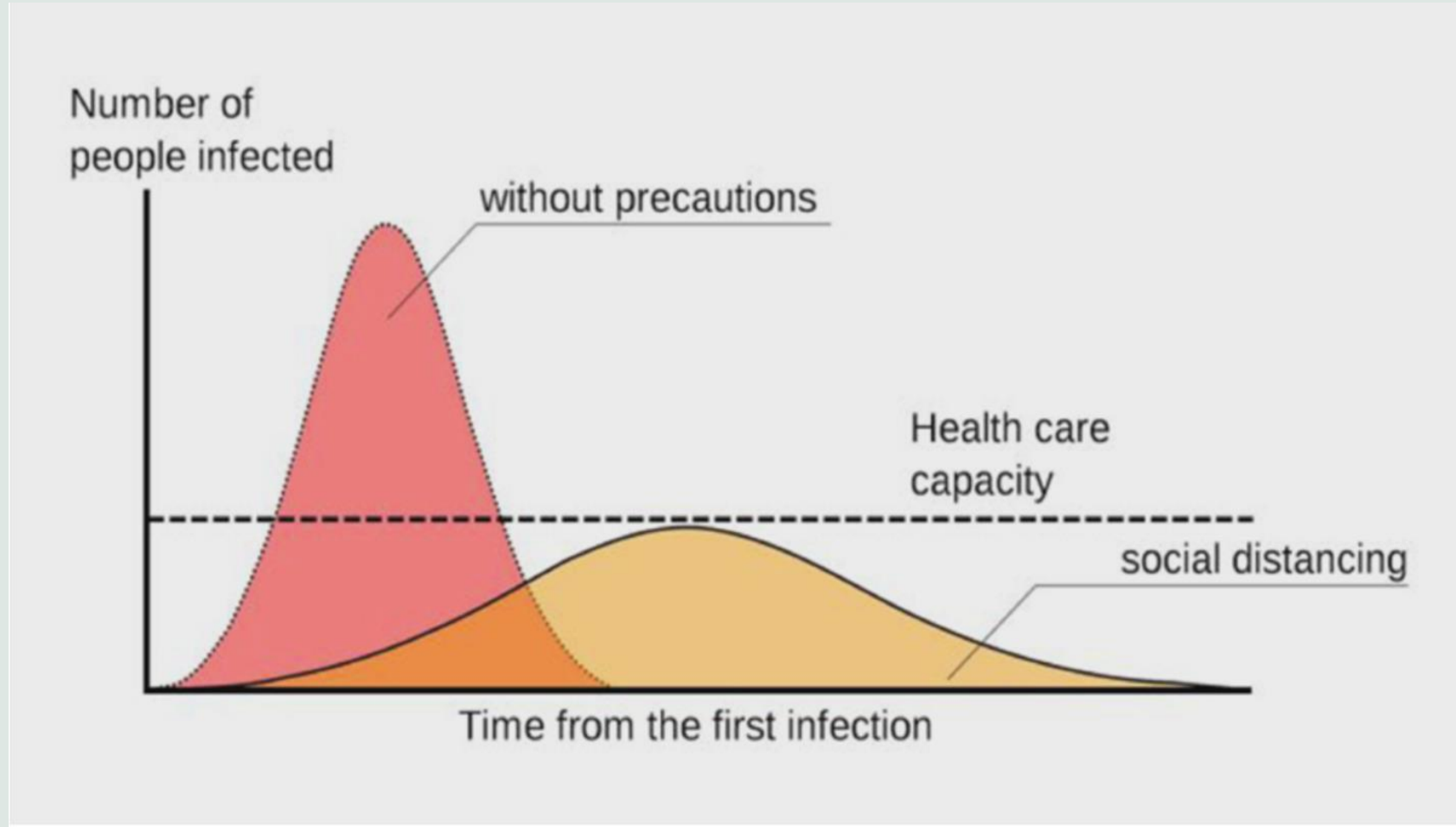
PW

PR

VI



Acute Phase View of COVID-19

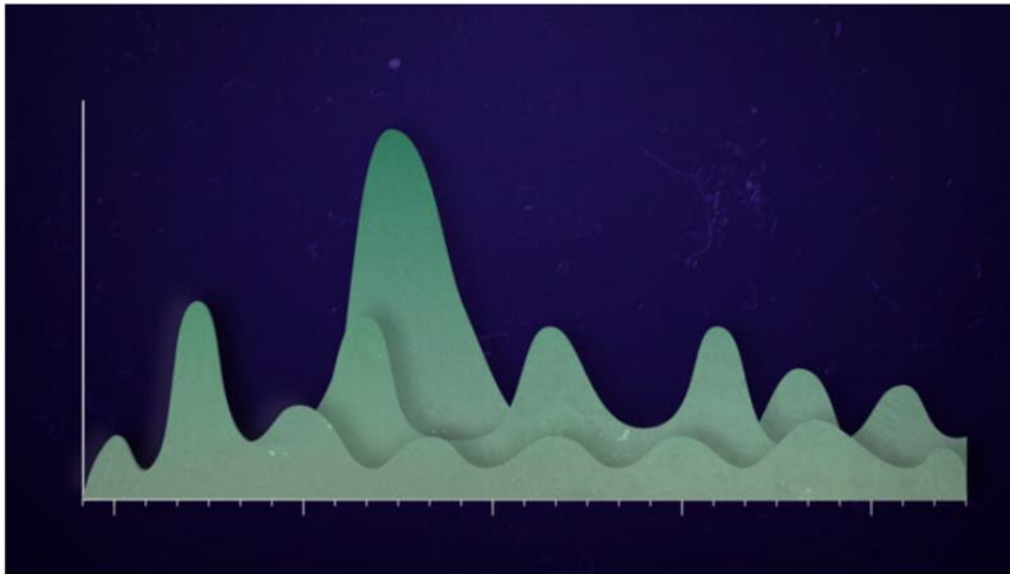


Now: Planning for a Life with SARS COV 2

SPECIAL REPORT

Three potential futures for Covid-19: recurring small outbreaks, a monster wave, or a persistent crisis

By SHARON BEGLEY @sxbegle / MAY 1, 2020



VIDEO: W.H.O. Official Warns That Coronavirus 'May Never Go Away'

By REUTERS

The World Health Organization's head of health emergencies said the coronavirus causing Covid-19 could become a long-term threat to be managed, not one that can be eradicated.



Transition from Acute to Chronic Response

- **Screening and Testing**

- Ongoing for symptomatic patients
- Do we test asymptomatic patients?
- What about serology testing?

- **Supply Chain and PPE**

- Stabilization and planning for expanded testing

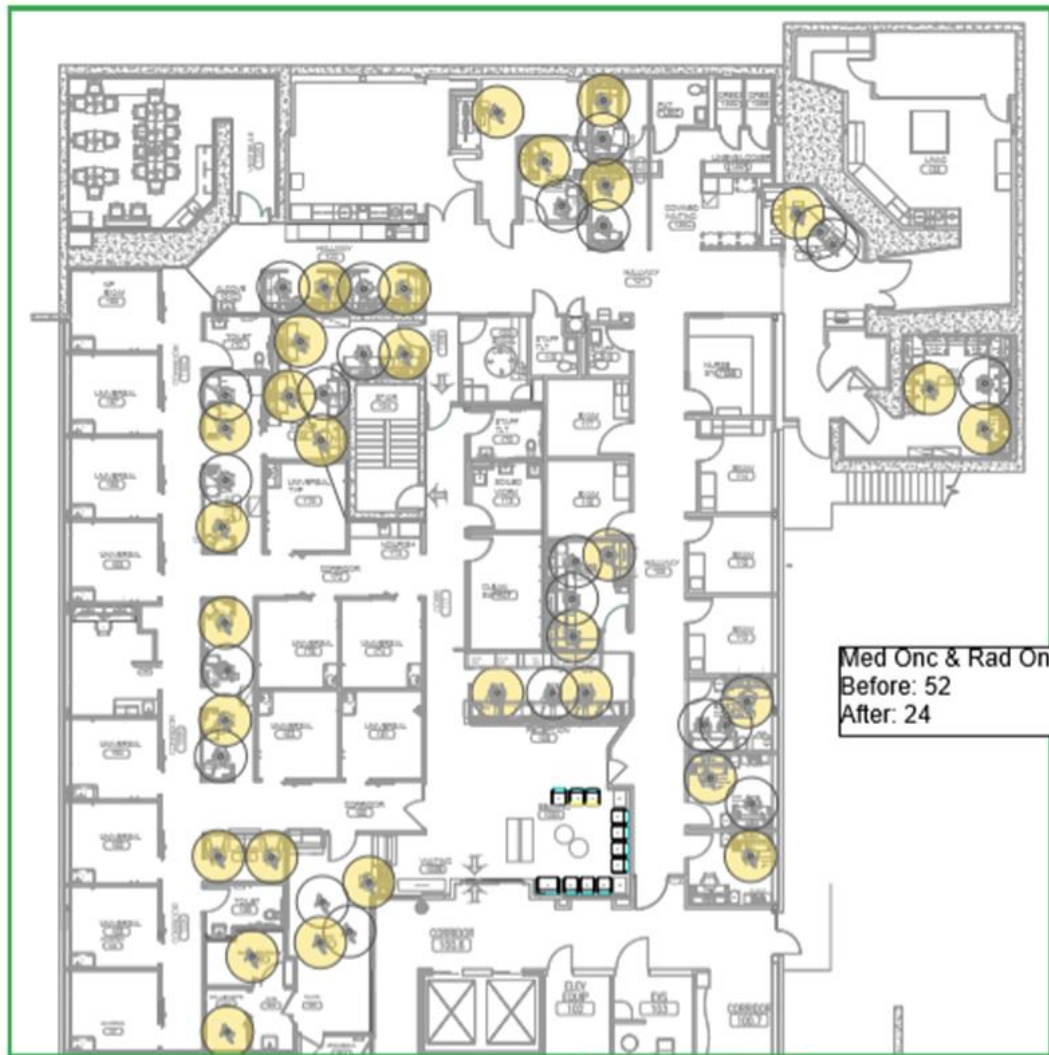
- **Patient Appointments**

- Resuming screening and non-urgent procedures
- Where will telehealth be optimal over time?

- **Work Environment**

- Universal masking
- Creating physical distancing
- Long term work from home





Northwest:
Total # of existing seats: 62
Total # of seats with 6 ft
distancing: 35
Approximate capacity with
distancing: 56%

Med Onc & Rad Onc
Before: 52
After: 24



Admin
Before: 10
After: 5



Transition from Acute to Chronic Response

- Financial Impacts and Mitigation
 - Tracking COVID related expenses
 - Cost Containment
 - Assistance- government assistance, philanthropy
- Morale, Well-being, Physical and Emotional Health
- The Non-COVID Surge



Social Distancing Support Cat





ACCC COVID-19 Resource Center & Listserv

- Weekly Webcast Series: Planning Your COVID-19 Testing Strategy, May 22, 3:00 PM EDT
- CANCER BUZZ Mini-Podcasts
- Evidence-Based Guidelines & Information
- Member Discussions & Resources on ACCCExchange

acc-cancer.org/COVID-19