



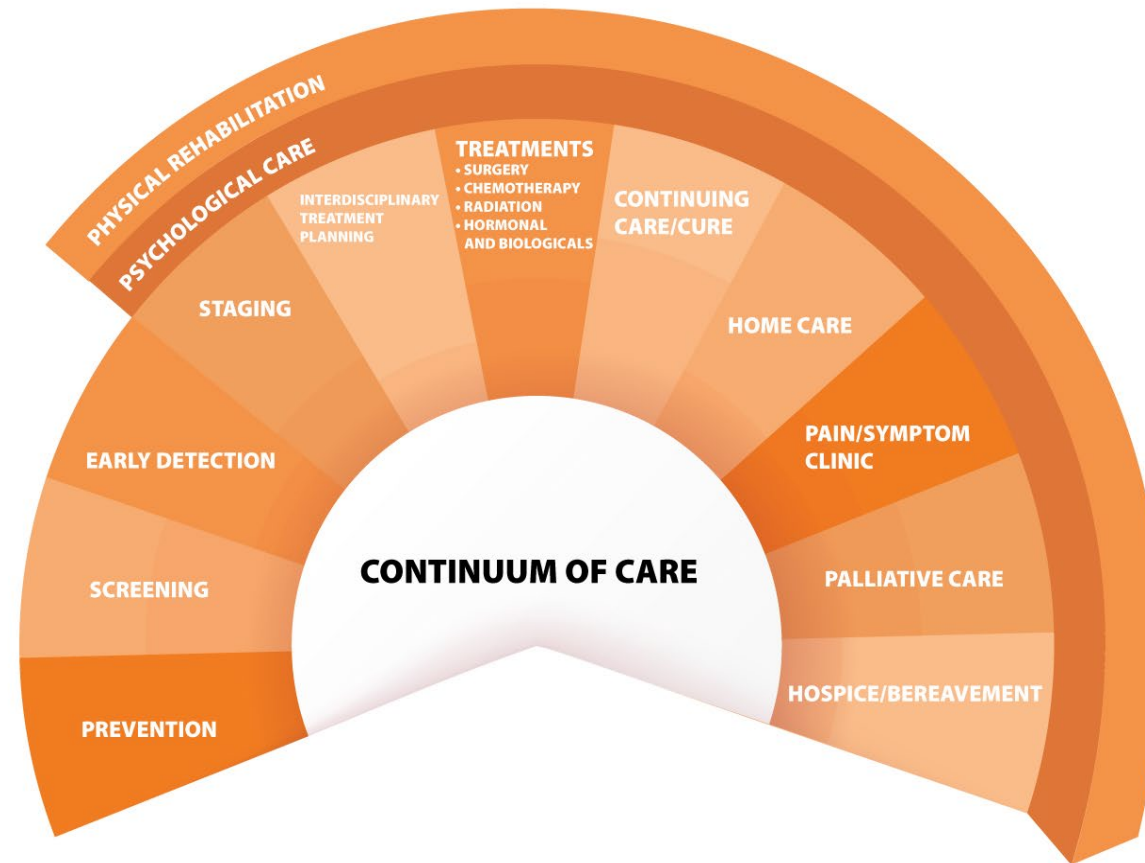
## Rehab and Psychosocial Programs and How They Can be Integrated

# Disclosure of Conflicts of Interest

---

- We have no relationships with ACCME-defined commercial interests.
  - Our Employment financial relationships include:
    - Revenue Cycle Coding Strategies
    - RC Billing
    - The Oncology Group
  - Financial/Board and Consulting Relationships:
    - Accuray, Care4ward, .decimal, Gold Anchor, IsoAid, Koning, Macromedics, Palette Life Sciences, Boston Scientific, Qfix, Reflexion, Elekta, Visicoil, Gore, Vantage Rx, ACRO, ACCC, AAMD, Various State Oncology Societies, Kukuna-O-Ka-La, Radiating Hope

# The Oncology Continuum of Care



# Psych Benefits to Operations

---

## Operational Elements:

- Essential to the Continuity of Care
- Robust Program – Complete Services
  - Assessment of Patient Mental Health at Beginning, During and End of Treatment
  - Reduction of Anxiety
  - Reduction of Depression
- Leads to increased maintenance of appointments
- Higher Participation in Support Groups
- Higher Participation in Focus Groups
- Preparation and Adoption towards Survivorship Programming
  - Living Will – DNR
  - Hospice Care

# Financial Benefits to Oncology Psych Care

---

## Financial Elements:

- While the true goal of Psycho-Social Programs is Patient mental well-being, there can be a financial benefit to an established program
- There are roughly about 9-10 codes that could apply here for licensed/credentialed clinicians.
- Methods to build a Robust Program
  - Additional support staff can be grown in house
  - Cancer centers may become training sites for Masters-Level counselors and social workers who enroll in an unpaid or student rate practicum/internship providing free services for patients
  - The benefits to students is to collect valuable training hours and experience
  - This allows for a connection with universities which could potentially lead to research and grant opportunities

# Marketing Benefits to Oncology Psych

---

## Marketing Elements:

- There are several aspects of a psychosocial program that could lead to profitable marketing opportunities.
- To quote Maya Angelou here “I've learned that people will forget what you said, people will forget what you did, but people will never forget how you made them feel.”
- A customer service aspect to Psych care may serve to differentiate you to competitors
- If people want to give back after their care, they are more likely to donate to their cancer center if they have had a positive experience, and psychosocial support plays a big part.
- Creating collateral and campaigns around the support services connects individuals in the community on an emotional and relatable level. So when it does come for them to choose oncology care, they will likely look to places that made them “feel” a certain way.
- Also, you can input psychosocial elements throughout the care continuum, so you have many marketing platforms to chose from!

# Patient Satisfaction to Oncology Psych

---

## Patient Satisfaction Elements:

- A big part of the psychosocial care programming is assessing patients at various parts of their treatment timeline.
- This gives a center multiple vantage points at how a patient (and their caregiver) are perceiving their experience and provides opportunities to make changes and corrections to unintended perceptions.
- Plus, happy and satisfied patients make great referrals!!

# Ideal Team of Oncology Psych

---

## FTE Elements:

- An ideal treatment team for a psychosocial program “Dream Team” would include:
  - Psychiatry
  - Licensed Social Workers
- Patient Navigators (Nurse, Social Workers)
  - Internship Program

Psychiatry – May be an added benefit

This type program creates the Psychosocial Oncology Mental Health Clinicians of the Future



# Oncology Rehab

---

## Cancer Rehabilitation Program Overview

# Oncology Rehab Responsibilities

---

- Timely, seamless, evidenced based care across the care continuum resulting in best patient outcomes.
- To return persons post cancer surgery to full or maximized pre-operative pain free, confident function with minimal or no limitation
- To maximize health, physiology and function and minimize loss during cancer treatments
- To return persons post cancer treatment to maximized comfort and function as soon as possible with minimized risk of long term and late side effects
- Provide expert clinical advice and insight to the multidisciplinary team regarding patients' musculoskeletal, physiological, integumentary, movement and functional needs and challenges

# Safety, Health Outcomes and Affordability



## Cancer Rehabilitation Services

To ensure our patients with cancer achieve their highest possible medical, health and quality of life outcomes

All persons diagnosed with cancer are offered a high-quality cancer rehabilitation consult and treatment if indicated.

# Services

- Physical Therapy
- Occupational Therapy
- Speech and Language Pathology
  - Provision of Evidence Based Treatments for Cancer related Physiological, Integumentary Movement and Functional Issues

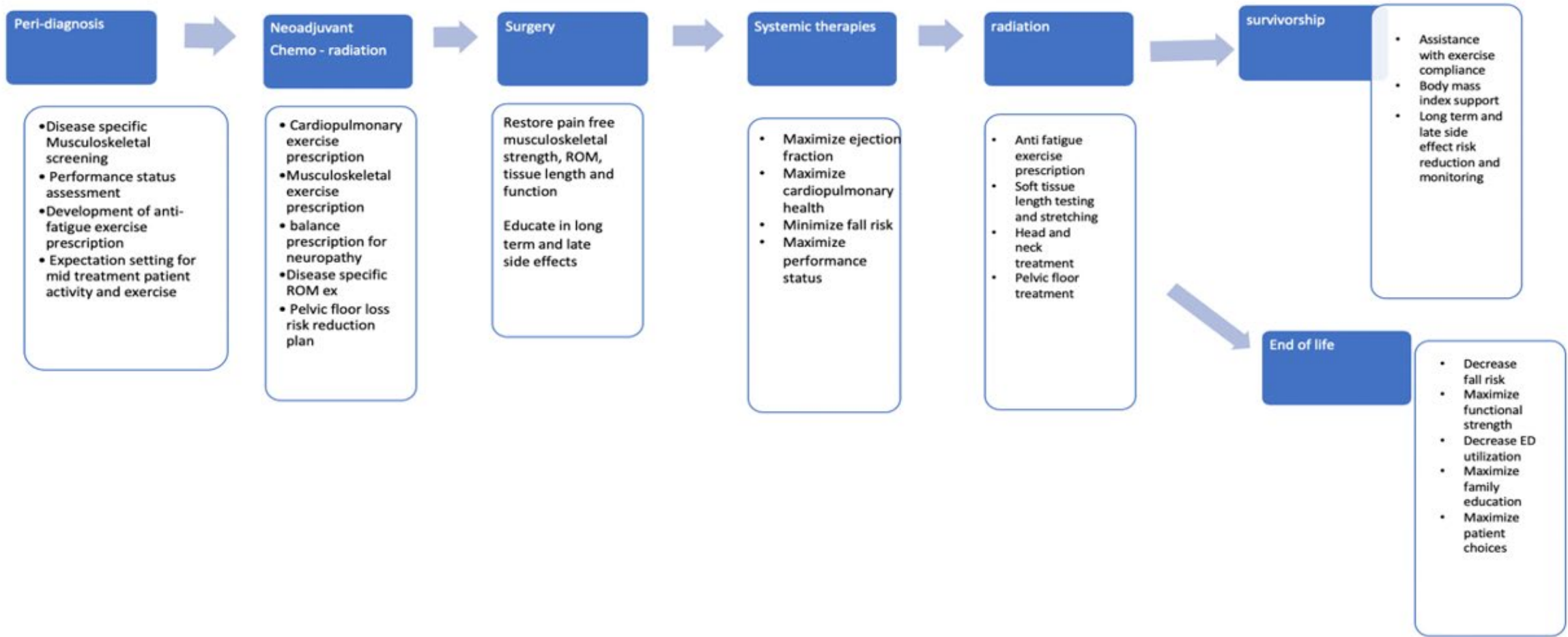
Fatigue	Pain
Weakness	Fibrosis
Incontinence	Lymphedema/Edema
Decreased Mobility	Balance
Gait Issues	Functional Issues
Cognitive Issues	Communication
Safety Issues	Independence

# Types of Services

---

- Screening, diagnosis and active surveillance for physiological, musculoskeletal, integumentary, communicative, cognitive and functional issues
- Interventions to treat/manage identified functional impairments and disabilities
- Physical activity recommendations and musculoskeletal, cardiopulmonary and balance exercise prescription development and oversight during and after treatment

# Rehabilitation Roles Through the Cancer Continuum



# Benefits to Patients

---

- Will live better
- Will live longer
- More will survive
- Lessened fatigue, pain, weakness, functional loss
- Maximized cardiopulmonary function
- Maintain / improve BMI
- Faster recovery post treatment

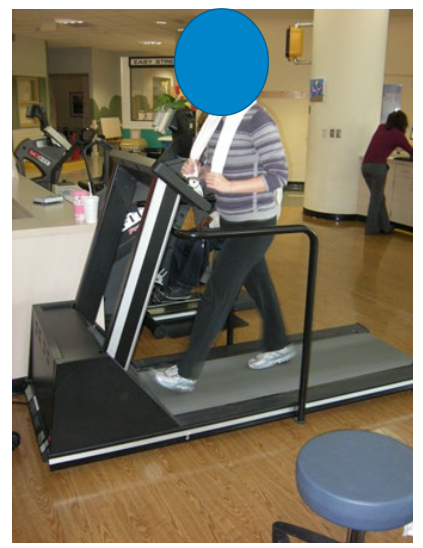
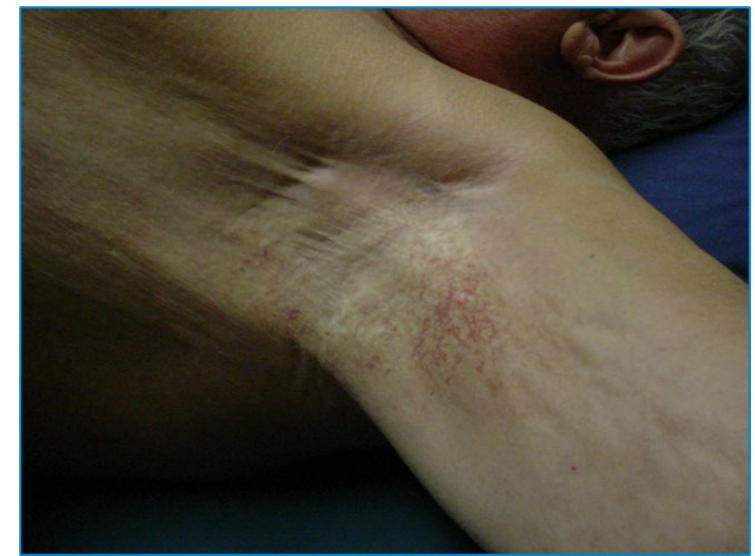
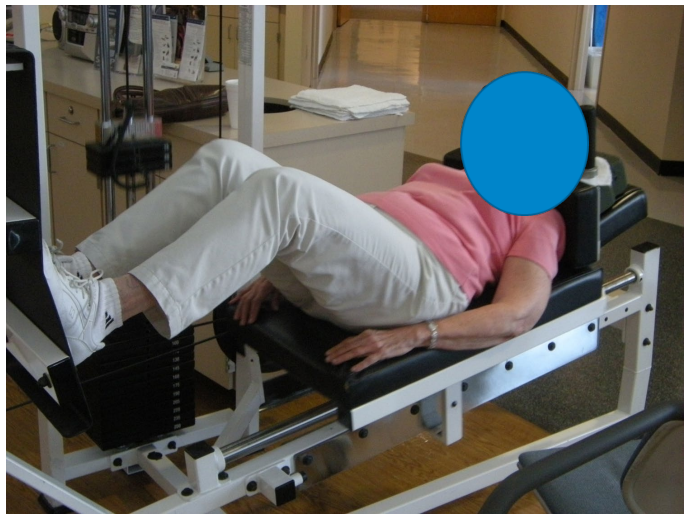
# Benefits to Medical Team

---

- Fewer ED Visits
- Shorter hospital LOS
- Decreased re-admits
- Fewer falls
- Improved chemotherapy delivery rate
- Better performance status
- Maximize BMI, EF



# Equipment Examples are Not Expensive for ROI



# Referral to Oncology Rehabilitation

---

- Oncology practitioners are encouraged to refer patients undergoing or pending cancer treatment to a rehabilitation professional at the peri-diagnosis period.
- Referrals are accepted from MD, NP, PA and may be paper or electronically with a service to physical therapy, occupational therapy or speech pathology.
- Either the referring clinician office or the patient can schedule the rehabilitation appointment at a location most appropriate and convenient for the patient.

# Things to Watch for In Oncology

---

- Alternative Payment Models
- Radiation
- Medical Oncology
- Bundling of Payments
- Financial Clearance
- Abscopal Effect
- Immunotherapies in combination with Radiation
- Daily Monitoring of Dose Effects

# Thank you

---



## Questions?

# Disclaimer

---

This presentation was prepared as a tool to assist attendees in learning about documentation, charge capture and billing processes. It is not intended to affect clinical treatment patterns. While reasonable efforts have been made to assure the accuracy of the information within these pages, the responsibility for correct documentation and correct submission of claims and response to remittance advice lies with the provider of the services. The material provided is for informational purposes only.

Efforts have been made to ensure the information within this document was accurate on the date of presentation. Reimbursement policies vary from insurer to insurer and the policies of the same payer may vary within different U.S. regions. All policies should be verified to ensure compliance.

CPT® codes, descriptions and other data are copyright 2021 American Medical Association (or such other date of publication of CPT®). All Rights Reserved. CPT® is a registered trademark of the American Medical Association. Code descriptions and billing scenarios are references from the AMA, CMS local and national coverage determinations (LCD/NCD).and standards nationwide.