

Title: Crisis Response Guidelines for Hospital and ICU Triage	Policy Number: 3.415	
Approved by: Chief Clinical Officer	Created: 3/23/2020	Revised/ Reviewed:

CHRISTUS Health Clinical Guideline

- I. KEY WORDS:** Pandemic, Influenza, COVID-19, Crisis Response, Crisis Standards
- II. OBJECTIVE:** To guide the provision of care during a respiratory viral pandemic or other public health emergency when crisis triaging pursuant to this policy becomes necessary. Application of these guidelines will require physician judgment at the point of patient care.
- III. POLICY STATEMENT:** During a crisis that requires these guidelines, our Mission and Values remain the same. Triage decisions should be made using operational and clinical guidelines according to these evidence-based clinical criteria related to condition and survivability in crisis circumstances such as a public health emergency, a pandemic, or other emergency situation that unpredictably increases the volume or health status severity of patients beyond standard operations. These guidelines should be used along with the NIMS standards of Incident Command.

All patients will be treated with respect, care, and compassion without regard to basis of race, ethnicity, color, national origin, religion, sex, disability, veteran status, age, genetic information, sexual orientation, gender identity, or any other protected characteristic under applicable law. However, this does not mean that all patients should or will receive the same treatments in response to a crisis.

IV. DEFINITIONS:

- A. **Emergency patients:** Those patients whose clinical conditions indicate that they require admission to the hospital and/or surgery within 24 hours.
- B. **Elective surgery:**
1. *Category 1:* Urgent patients who require surgery within 30 days.
 2. *Category 2:* Semi-urgent patients who require surgery within 90 days.
 3. *Category 3:* Non-urgent patients who need surgery at some time in the future.
- C. **Long-term Care Facility:** A residential program with 24-hour care, to include: Residential Care Facilities, Nursing Homes, Skilled Nursing Facilities, Assisted Living, and other such facilities.
- D. **Palliative care:** To make a patient comfortable by treating symptoms from an illness and by addressing issues causing physical or emotional pain or suffering.
- E. **Patient categories:** Triage levels for patients
1. **BLUE** – Lowest chance of survival even with treatment; provide palliative care as appropriate; SOFA \geq 15, mortality rate > 80%
 2. **YELLOW** – Intermediate priority for treatment; SOFA = 10 to 14, mortality rate 40-60%
 3. **RED** – Highest chance of survival with treatment; highest priority for admission and treatment; SOFA = 1 to 9, mortality rate 10-20%
 4. **GREEN** – Highest chance of survival without treatment; SOFA = 0
- F. **Peer Based Review Team (PBRT):** A peer review resource jointly authorized by a care site's Governing Board and its Medical Executive Committee or similarly authorized committee. It consists of 2 to 4 physicians, not including advisors or designees. The PBRT's function is to

Title: Crisis Response Guidelines for Hospital and ICU Triage	Policy Number: 3.415	
Approved by: Chief Clinical Officer	Created: 3/23/2020	Revised/ Reviewed:

CHRISTUS Health Clinical Guideline

make decisions about and evaluate the quality of medical care or health care services with an emphasis on reviewing patient assessment decisions, including hospital and ICU admissions, patient triage, elective procedures, discharge planning, transition to comfort care, and other interventions or processes as deemed necessary. The PBRT will objectively evaluate patients using the criteria and protocols below to identify opportunities, necessity, and suitability of care. PBRT activities are intended to be confidential and peer review privileged in nature.

- G. **Patient and Family action Team (PFT):** A team that provides counseling and care coordination and to work with the families of loved ones who have been triaged to comfort care, e.g. **BLUE** patients. Team members should include spiritual care staff and others not directly involved in the care and treatment of patients in order to preserve the resource of clinicians.
- H. **SOFA Score:** The Sequential Organ Failure Assessment assesses the performance of organ systems (neurologic, blood, liver, kidney, and blood pressure/hemodynamics) and assigns a score based on data for each system. Higher SOFA scores mean higher likelihood of mortality.
- I. **National Incident Management System (NIMS):** Guides all levels of government, non-governmental organizations, and the private sector to work together to prevent, protect against, mitigate, respond to, and recover from incidents. It contains shared vocabulary, systems, and processes for the National Preparedness System.
- J. **Worried Well:** Persons who do not need treatment but want reassurance by clinicians.

V. PROCESS:

- A. Establish a PBRT per the Peer Based Review Team Guidelines. The PBRT makes decisions and evaluates quality following Flowchart 1, the Triage Tools and Tables, and related documents.
- B. Institute a PFT. Ensure security is available to assist with difficult, emotional interactions.
- C. Medical staff should establish a method for peer support and expert consultation to PBRTs.
- D. During a situation where a pandemic or public health threat has been identified that could possibly impact CHRISTUS Health ministries, a triage status system will be utilized to guide readiness and interventions. See Table 1: Overview of Pandemic Triage Levels.
- E. These guidelines and processes apply to all patients, regardless of COVID-19 status.
- F. Triage Levels will be implemented and scaled up locally based on local events, not at the system level. The decision to increase the Triage Level in a particular Ministry will be made by the local Incident Command, the system Incident Command, and the CHRISTUS Health CMO.

TABLE 1: OVERVIEW OF PANDEMIC TRIAGE LEVELS

Triage Level 0	Triage Level 1	Triage Level 2	Triage Level 3
First known threat identified	First known community spread	High volume community spread	Local or state disaster declarations, schools closed, facilities inundated
Implement Triage Level 0 Checklist	Implement Triage Level 1 Checklist	Implement Triage Level 2 Checklist	Implement Triage Level 3 Checklist

Title: Crisis Response Guidelines for Hospital and ICU Triage	Policy Number: 3.415	
Approved by: Chief Clinical Officer	Created: 3/23/2020	Revised/ Reviewed:

CHRISTUS Health Clinical Guideline

Emergency Department, Hospital, and ICU - Clinical Triage

Use **HOSPITAL AND ICU/VENTILATOR ADMISSION TRIAGE** algorithm and tools on the following pages to determine which patients to send home for palliative care or medical management and which patients to admit or keep in hospital or ICU as supported by the patient's SOFA score, patient category, and exclusion criteria.

Physician judgment should be used in applying these guidelines. Other factors to consider when applying triage guidelines include:

- If the patient can be transferred to another local facility or a facility elsewhere in CHRISTUS that has the needed resource available.
 - If another facility is available, transfer should be considered before withholding or withdrawing life-sustaining treatment based on these guidelines, especially if the patient does not have COVID-19 and is not a Person Under Investigation (PUI).
- Whether the patient is homeless or has someone to care for them at home.
- Whether the patient is pregnant with gestational age great than 12 weeks or is past viability.
- If multiple patients meet inclusion criteria and are equally likely to benefit from an available resource, the available resource should be provided on a first-come first-served basis.

ED Bedside Provider team all triage levels:

Do **not** use high flow nasal cannula for pre-oxygenation. Do **not** use nebulizers use MDI's with spacers to limit broadcasting of virus. Do **not** use BIPAP. **DO** Use video laryngoscopy (glide scope) as opposed to direct laryngoscopy preferably in a Negative pressure room.

Triage Level 2:

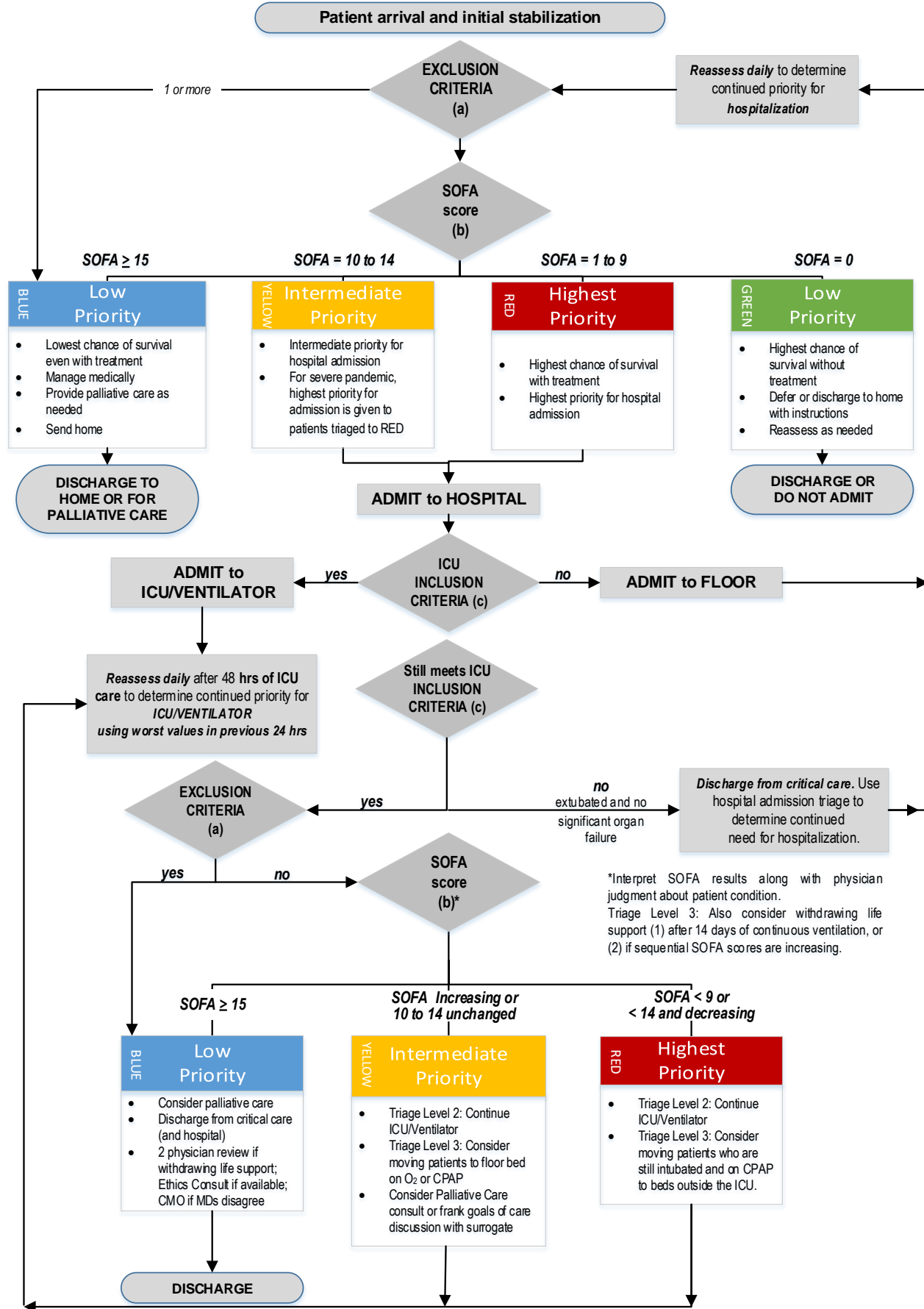
1. Initiate **HOSPITAL AND ICU/ VENTILATOR TRIAGE** algorithm to determine priority for ICU admission, intubation, and/or mechanical ventilation.
2. Reassess need for ICU/Ventilator treatment daily after 48 hours of ICU care.
3. If a patient is triaged as **BLUE**, either before admission or in the ICU, a DNR order must be automatically written. Complete a LaPOST, MOST, or OOH-DNR form if the patient will be discharged.

Triage Level 3:

1. Continue to use **HOSPITAL AND ICU/ VENTILATOR TRIAGE** algorithm to determine priority for ICU, intubation, and/or mechanical ventilation.
2. Triage more **YELLOW** patients to floor on oxygen or CPAP.
3. Triage more **RED** patients who are intubated and on CPAP to floor.

FLOWCHART 1: HOSPITAL AND ICU/VENTILATOR ADMISSION TRIAGE

Applies at Pandemic Triage Levels 2 and 3



TRIAGE TOOLS AND TABLES

These criteria and tools are intended to be based on evidence-based likelihood of survival, not external judgments of a patient’s quality-of-life. Consider them to the extent they affect survival within reasonable medical judgment.

(a) EXCLUSION CRITERIA for Hospital Admission:

The patient is excluded from hospital admission or transfer to critical care if ANY of the following is present **and would significantly decrease their comparable likelihood of survival:**

1. **Patient Wishes.** Have a goals of care discussion with each patient or surrogate. Ask if their goals of care include temporary or prolonged intensive care given the prognosis, or if they prefer comfort care.
2. **Volunteers.** Patient voluntarily offers their chance of admission or a ventilator as a gift to another patient in need. See Appendix 3 below.
3. **Acute severe neurologic event with minimal chance of functional neurologic recovery (physician judgment).** Includes traumatic brain injury, severe hemorrhagic stroke, hypoxic ischemic brain injury, and intracranial hemorrhage.
4. **Severe acute trauma with a REVISED TRAUMA SCORE <2 (see (d) and (e))**
GCS: _____ SBP: _____ RR: _____ Revised trauma score: _____
5. **Severe burns with <50% anticipated survival** (patients identified as “Low” or worse on the TRIAGE DECISION TABLE FOR BURN VICTIMS (f)). Burns not requiring critical care resources may be cared for at the local facility (e.g., burns that might have been transferred to a Burn Center under normal circumstances). **Score: _____**
6. **Cardiac arrest not responsive to ACLS interventions within 20 minutes,** includes unwitnessed, recurrent, or trauma-related arrest.
7. **Known end-stage dementia** medically treated and requiring assistance with activities of daily living.
8. **Advanced untreatable neuromuscular disease** (such as ALS, end-stage MS, or SMA) requiring assistance with activities of daily living or requiring chronic ventilatory support.
9. **Known chromosomal or untreatable disorders** that are uniformly fatal in the first 2 years of life.
10. **Incurable metastatic malignant disease.**
11. **End-stage organ failure** meeting the following criteria:
 - Heart: NEW YORK HEART ASSOCIATION (NYHA) FUNCTIONAL CLASSIFICATION SYSTEM Class III or IV (g). **Class: _____**
 - Lung (any of the following):
 - Chronic Obstructive Pulmonary Disease (COPD) with Forced Expiratory Volume in one second (FEV1) < 25% predicted baseline, PaO2 < 55 mm Hg, or severe secondary pulmonary hypertension.
 - Cystic fibrosis with post-bronchodilator FEV1 <30% or baseline PaO2 <55 mm Hg.
 - Pulmonary fibrosis with VC or TLC < 60% predicted, baseline PaO2 <55 mm Hg, or severe secondary pulmonary hypertension.
 - Primary pulmonary hypertension with NYHA class III or IV heart failure (g), right atrial pressure >10 mm Hg, or mean pulmonary arterial pressure >50 mm Hg.
 - Liver: PUGH SCORE >7 (h), when available. Includes bili, albumin, INR, ascites, encephalopathy. **Total score: _____**
12. **Age:** Consider excluding from hospital admission based on age ranges below and PBRT judgment based on presence of comorbidities
 - Triage Level 1: No age restriction
 - Triage Level 2: >90 years
 - Triage Level 3: >85 years

(b) The Sequential Organ Failure Assessment (SOFA)

SOFA score	1	2	3	4
<u>Respiration</u> PaO ₂ /FIO ₂ (mmHg) SaO ₂ /FIO ₂	<400 221-301	<300 142-220	<220 67-141	<100 <67
<u>Coagulation</u> Plt x10 ³ /mm ³	<150	<100	<50	<20
<u>Liver</u> Bilirubin (mg/dL)	1.2-1.9	2.0-5.9	6.0-11.9	>12.0
<u>Cardiovascular</u> Hypotension	MAP <70	Dopamine ≤5 or dobutamine any	Dopamine > 5 or norepinephrine ≤ 0.1	Dopamine >15 or Norepinephrine > 0.1
<u>CNS</u> Glasgow Coma Score	13-14	10-12	6-9	<6
<u>Renal</u> Creatinine (mg/dL) or Urine output	1.2-1.9	2.0-3.4	3.5-4.9 or <500 (mL/day)	>5.0 or <200 (mL/day)

For Respiratory Scoring:

- The PaO₂/FiO₂ ratio will be calculated for all patients with an indwelling arterial cannula for any part of each day and the lowest value for that 24-h period used to calculate the respiratory SOFA score.
- For patients on nasal cannula oxygen, an estimated FiO₂ may be calculated by multiplying the liter flow/minute by 0.03 and adding that to 0.21 or using a standard table.
- Patients dependent upon high flow nasal cannula (HFNC) to maintain adequate oxygenation should have their PaO₂/FiO₂ ratio calculated based on the fraction of inspired oxygen set by the device.

(c) ICU/Ventilator INCLUSION CRITERIA

Patient must have **NO EXCLUSION CRITERIA (a) and** at least one of the following **INCLUSION CRITERIA:**

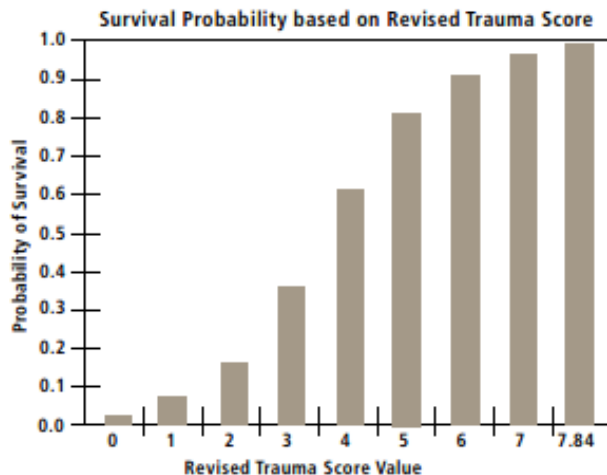
1. **Requirement for invasive ventilatory support**
 - Refractory hypoxemia (SpO₂ <90% on non-rebreather mask or FIO₂ >0.85)
 - Respiratory acidosis (pH <7.2)
 - Clinical evidence of impending respiratory failure
 - Inability to protect or maintain airway
2. **Hypotension* with clinical evidence of shock** refractory to volume resuscitation, and requiring vasopressor or inotrope support that cannot be managed in a ward setting.**
***Hypotension** = Systolic BP <90 mm Hg for patients age >10 years old, or <70 + (2 x age in years) for patients ages 1 to 10, or relative hypotension;
****Clinical evidence of shock** = altered level of consciousness, decreased urine output, or other evidence of end-stage organ failure

(d) **GLASGOW COMA SCORE (GCS)** The GCS score is used as part of the Revised Trauma Score (table (e)) in determining exclusion criteria for hospital admission in the case of pandemic flu at triage levels 2 and 3.

Glasgow Coma Scoring Criteria				
Criteria	Adults and Children	Infants and Young Toddlers	Score	Criteria Score
Best Eye Response (4 possible points)	No eye opening	No eye opening	1	
	Eye opens to pain	Eye opens to pain	2	
	Eye opens to verbal command	Eye opens to speech	3	
	Eyes open spontaneously	Eyes open spontaneously	4	
Best Verbal Response (5 possible points)	No verbal response	No verbal response	1	
	Incomprehensible sounds	Infant moans to pain	2	
	Inappropriate words	Infant cries to pain	3	
	Confused	Infant is irritable and continually cries	4	
	Oriented	Infant coos or babbles (normal activity)	5	
Best Motor Response (6 possible points)	No motor response	No motor response	1	
	Extension to pain	Extension to pain	2	
	Flexion to pain	Abnormal flexion to pain	3	
	Withdraws from pain	Withdraws from pain	4	
	Localizes to pain	Withdraws from touch	5	
	Obeys commands	Moves spontaneously or purposefully	6	
Total Score (add 3 subscores; range 3 to 15):				
GCS – If on vent and sedated: Triage Level 2, assume GCS of 15; Triage Level 3, use last known GCS				
FiO2 – Use indwelling arterial cannula, nasal cannula O2, or fraction on inspired O2 if on HFNC				

(e) REVISED TRAUMA SCORE (RTS)

Values for the REVISED TRAUMA SCORE (RTS) range from 0 to 7.8408. The RTS is heavily weighted towards the GLASGOW COMA SCORE (GCS) to compensate for major head injury without multisystem injury or major physiological changes. The RTS correlates well with the probability of survival. A Revised Trauma Score of <2 is an exclusion criterion for hospital admission during a pandemic flu at triage levels 2 and 3.



Revised Trauma Score Calculation				
Criteria	Score	Coded value	Weighting	Adjusted Score
Glasgow Coma Score	3	0	x 0.9368	
	4 to 5	1		
	6 to 8	2		
	9 to 12	3		
	13 to 16	4		
Systolic Blood Pressure (SBP)	0	0	x 0.7326	
	1 to 49	1		
	50 to 75	2		
	76 to 89	3		
	>89	4		
Respiratory Rate (RR) in breaths per minute (BPM)	0	0	x 0.2908	
	1 to 5	1		
	6 to 9	2		
	>29	3		
	10 to 29	4		
Revised Trauma Score (add 3 adjusted scores):				

(f) TRIAGE DECISION FOR BURN VICTIMS A burn score of “Low” or worse on this table is an exclusion criterion for hospital admission in the case of pandemic flu at triage levels 2 and 3.

Age (yrs)	Burn Size (% total body surface area)									
	0-10%	11-20%	21-30%	31-40%	41-50%	51-60%	61-70%	71-80%	81-90%	91%+
0-1.9	Very high	Very high	Very high	High	Medium	Medium	Medium	Low	Low	Low/expectant
2.0-4.9	Outpatient	Very high	Very high	High	High	High	Medium	Medium	Low	Low
5.0-19.9	Outpatient	Very high	Very high	High	High	High	Medium	Medium	Medium	Low
20.0-29.9	Outpatient	Very high	Very high	High	High	Medium	Medium	Medium	Low	Low
30.0-39.9	Outpatient	Very high	Very high	High	Medium	Medium	Medium	Medium	Low	Low
40.0-49.9	Outpatient	Very high	Very high	Medium	Medium	Medium	Medium	Low	Low	Low
50.0-59.9	Outpatient	Very high	Very high	Medium	Medium	Medium	Low	Low	Low/expectant	Low/expectant
60.0-69.9	Very high	Very high	Medium	Medium	Low	Low	Low	Low/expectant	Low/expectant	Low/expectant
70.0+	Very high	Medium	Medium	Low	Low	Low/expectant	Expectant	Expectant	Expectant	Expectant

Outpatient: Survival and good outcome expected, without requiring initial admission; **Very high:** Survival and good outcome expected with limited/short-term initial admission and resource allocation (straightforward resuscitation, LOS <14-21 days, 1-2 surgical procedures); **High:** Survival and good outcome expected (survival ≥90%) with aggressive and comprehensive resource allocation, including aggressive fluid resuscitation, admission ≥14-21 days, multiple surgeries, prolonged rehabilitation; **Medium:** Survival 50-90% and/or aggressive care and comprehensive resource allocation required, including aggressive resuscitation, initial admission ≥14-21 days, multiple surgeries and prolonged rehabilitation; **Low:** Survival <50% even with long-term aggressive treatment and resource allocation; **Expectant:** Predicted survival ≤10% even with unlimited aggressive treatment.

(g) NEW YORK HEART ASSOCIATION (NYHA) FUNCTIONAL CLASSIFICATION SYSTEM

The NYHA functional classification system relates symptoms to everyday activities and the patient’s quality of life. NYHA Class III or IV heart failure are exclusion criteria for hospital admission in the case of pandemic flu at triage levels 2 and 3

NYHA Classes	
Class	Patient Symptoms
Class I (Mild)	No limitation of physical activity. Ordinary physical activity does not cause undue fatigue, palpitations, or dyspnea.
Class II (Mild)	Slight limitation of physical activity. Comfortable at rest, but ordinary physical activity results in fatigue, palpitations, or dyspnea.
Class III (Moderate)	Marked limitation of physical activity. Comfortable at rest, but less than ordinary activity causes fatigue, palpitations, or dyspnea.
Class IV (Severe)	Unable to carry out physical activity without discomfort. Symptoms of cardiac insufficiency at rest. If any physical activity is undertaken, discomfort is increased.

Used with permission from www.aboutf.org

(h) PUGH SCORE A total PUGH SCORE >7 is an exclusion criterion for hospital admission in the case of pandemic flu at triage levels 2 and 3.

Scoring criteria			
Criteria	Value	Points	Total for criteria
Total Serum Bilirubin	<2 mg/dL	1	
	2-3 mg/dL	2	
	>3 mg/dL	3	
Serum Albumin	>3.5 g/dL	1	
	2.8 - 3.5 g/dL	2	
	<2.8 g/dL	3	
INR	<1.70	1	
	1.71-2.20	2	
	>2.20	3	
Ascites	None	1	
	Controlled medically	2	
	Poorly controlled	3	
Encephalopathy	None	1	
	Controlled medically	2	
	Poorly controlled	3	
Total Pugh Score			
Score interpretation			
Total PUGH SCORE	Class		
5-6	A	Life expectancy 15-20 years Abdominal surgery perioperative mortality 10%	
7 to 9	B	Liver transplant evaluation indicated Abdominal surgery perioperative mortality 30%	
10 to 15	C	Life expectancy 1-3 years Abdominal surgery perioperative mortality 82%	

Appendix 1: Guideline on Code Status for COVID-19

1. These guidelines on code status apply to all patients confirmed to have COVID-19 AND all PUIs.
2. In a code, staff need to follow regular processes for a code with a patient in isolation
 1. This means caregivers responding to a code **must put on PPE** before assisting with a resuscitation attempt.
 2. Since CPR/ACLS is an aerosolizing procedure, caregivers who do not wear PPE while attempting resuscitation on a patient with confirmed or suspected COVID-19 **will be subject to quarantine** in order to prevent spread of the illness.
 3. Responders should protect themselves in any response and COVID-19 does not change the obligation to protect yourself while trying to rescue others.
3. Caregivers should be re-educated on the PPE expectations during resuscitation attempts, especially those in the ED, ICU, and members of the Rapid Response Team.
4. Concerns about medically inappropriate or futile care that does not fall under the triage guidelines should follow the normal policy for addressing these concerns. Ethics Consults are always available.

Appendix 2: Post-Mortem Care of COVID-19 Patients

There is no specific guidance from the CDC on what to do with the bodies of deceased COVID-19 patients, however the following guidance should be kept in mind:

Most often, spread from a living person happens with close contact (i.e., within about 6 feet) via respiratory droplets produced when an infected person coughs or sneezes, similar to how influenza and other respiratory pathogens spread. This route of transmission is not a concern when handling human remains or performing postmortem procedures.

Postmortem activities should be conducted with a focus on avoiding aerosol generating procedures, and ensuring that if aerosol generation is likely (e.g., when using an oscillating saw) that appropriate engineering controls and personal protective equipment (PPE) are used. These precautions and the use of Standard Precautions should ensure that appropriate work practices are used to prevent direct contact with infectious material, percutaneous injury, and hazards related to moving heavy remains and handling embalming chemicals.

See CDC Guidance Document for collecting and submitting specimens post-mortem...

www.cdc.gov/coronavirus/2019-ncov/hcp/guidance-postmortem-specimens.html

Transportation of Human Remains

1. Follow standard routine procedures when transporting the body of a patient with COVID-19 after specimens have been collected and the body has been bagged.
2. Disinfect the outside of the bag with an EPA-registered hospital disinfectant applied according to the manufacturer's recommendations.
3. Wear disposable nitrile gloves when handling the body bag.

Appendix 3: Sample Language for Discussing a Voluntary Gift

Out of a sense of self-sacrifice, love of neighbor, or a compassionate participation in the healing ministry of Jesus Christ, some patients may wish to voluntarily give their access to the hospital, ICU, ventilator, or other resource to another person. If a patient is willing to make such a gift, it should be witnessed (following the requirements for advance directives) and documented in the medical record. Surrogate decision makers or agents with medical power of attorney may **not** make this decision on

behalf of a patient; however, they can still refuse life sustaining treatment if they believe it is disproportionate based on the patient's wishes or best interest.

Here is sample language to consider when bringing this up with patients as part of a goals of care discussion:

1. "As you know, there are currently more patients than the hospital has the resources to treat. We are asking all patients if they would like to give their spot to another patient in need. If that is something you would like to consider, let us know. If not, we have a team of physicians who will evaluate you to determine the most appropriate treatment."
2. "You may have heard hospitals in our area are overwhelmed with patients. The resources currently available are not enough to meet the needs of all patients. Some people have asked that their opportunity to receive treatment be given to other patients. If you are not interested, that is perfectly okay and we will go on as normal."
3. "Due to how serious the epidemic is, no hospital in our area has the resources to meet the requests of every patient. We have a team of doctors who are assessing every patient to make sure we provide you with the most benefit possible. One option you have is to make a gift of certain medical resources you might otherwise use to another patient if you choose to do so. This is completely voluntary and will not affect other decisions made about your care. If you choose not to, we will ask a team of physicians to assess you. Either way, we will give you the best care possible moving forward, considering the resources you might want to use yourself or give to others."

VI. REGULATIONS/REQUIREMENTS

- A. The Joint Commission Chapter Emergency Management, Standard Labels EM .01.01.01, .02.01.01, .02.02.01, .02.02.03, .02.02.05, .02.02.07, .02.02.09, .02.02.11, .03.01.01, .03.01.03.
Note: The following State Regulations crosswalk to The Joint Commission Chapter on Emergency Preparedness.
- B. CMS Conditions of Participation (Hospitals). Emergency Preparedness
- C. Louisiana State Operations Manual (SOM): E-0001. Compliance with Applicable Emergency Preparedness Requirements. State Regulations: Emergency Preparedness LAC 48:I.9309.A.2
- D. New Mexico State Operations Manual (SOM): E-0001 Compliance with Applicable Emergency Preparedness Requirements. State Regulations NMAC 7.7.2.25A(1)(a): Disaster and Emergency Management; Plan.
- E. Texas State Operations Manual (SOM): E-0001 Compliance with Applicable Emergency Preparedness Requirements. State Regulations TAC 133.41(k)(3): Hospital Functions and Services; Medical Staff; 25 TAX 133.45(c) (1): Miscellaneous Policies and Protocols; Disaster Preparedness.

VII. RELATED POLICIES:

- A. Emergency Management Plans – Per Facility
- B. Infection Prevention Plans – Per Facility
- C. Security Management Plan – Per Facility
- D. Medical Staff Rules and Regulations – Emergency Preparedness – Per Facility
- E. 3.411 COVID-19 N95 Respirator and Medical Mask Extended Use and Reuse Guidelines
- F. 3.412 Visitor Screening Guideline
- G. 3.413 Associate/Clinician Screening Guideline
- H. Peer Based Review Team Guidelines

VIII. REFERENCES:

1. Utah Pandemic Influenza Hospital and ICU Triage Guidelines, Utah Department of Health, Version 2, 2009, available at pandemicflu.utah.gov/plan/med_triage081109.pdf
2. Jones AE, Trzeciak S, Kline JA. The Sequential Organ Failure Assessment score for predicting outcome in patients with severe sepsis and evidence of hypoperfusion at the time of emergency department presentation. *Critical Care Medicine*. 2009;37(5):1649–1654.
3. Christian MD, Hawryluck L, Wax RS, et al. Development of a triage protocol for critical care during an influenza pandemic. *Canadian Medical Association Journal*. 2006;175(11):1377-1381.
4. Commentary: Melnychuk RM, Kenny NP. Pandemic triage: the ethical challenge. *Canadian Medical Association Journal*. 2006;175(11):1393.
5. Hick JL, O’Laughlin DT. Concept of operations for triage of mechanical ventilation in an epidemic. *Academic Emergency Medicine*. 2006;13(2):223-229.
6. Champion HR, Sacco WJ, Carnazzo AJ, Copes W, Fouty WJ. Trauma score. *Critical Care Medicine*. 1981;9(9):672-676.
7. Champion HR, Sacco WJ, Copes WS, Gann DS, Gennarelli TA, Flanagan ME. A revision of the Trauma Score. *Journal of Trauma*. 1989;29(5):623-629.
8. Teasdale G, Jennett B. Assessment of coma and impaired consciousness. A practical scale. *Lancet*. 1974;2(7872):81-84.
9. New York Heart Association. The stages of heart failure – NYHA classification. Heart Failure Society of America Web site. [http:// www.abouthf.org/questions/stages.htm](http://www.abouthf.org/questions/stages.htm). Published 2002. Updated September 28, 2006. Accessed December 5, 2007.
10. Pugh RNH, Murray-Lyon M, Dawson JL, Pietroni MC, Williams R. Transection of the oesophagus for bleeding oesophageal varices. *British Journal of Surgery*. 1973;60(8):646-649.

IX. OFFICE OF PRIMARY RESPONSIBILITY: Clinical Excellence Division and Mission Integration**Approved by:**

Sam Bagchi, MD
Executive Vice President & Chief Clinical Officer3/23/2020

Date