



knowledge changing life

ONCOLOGY HEALTH DISPARITIES IN WISCONSIN

*Kirsten Beyer, PhD, MPH, MS; Associate Professor, Medical College of Wisconsin
Wisconsin Association of Hematology and Oncology Annual Conference
Hilton Milwaukee City Center; Milwaukee, WI*

September 24, 2022

DISCLOSURE OF CONFLICTS OF INTEREST

- Kristen Beyer, PhD, MPH, MS, has no relevant financial relationships to disclose.

OVERVIEW

- Summarize statewide cancer incidence and mortality rates
 - Cancer site
 - Sex
 - Race and ethnicity
- Summarize M7 region
- Understand Site specific geospatial patterns
 - Wisconsin and Southeastern Wisconsin M7 region
 - Breast, Colorectal, Lung, Prostate, Cervical, Pancreatic, Multiple Myeloma
- How do our disparities compare?

STATEWIDE RATES

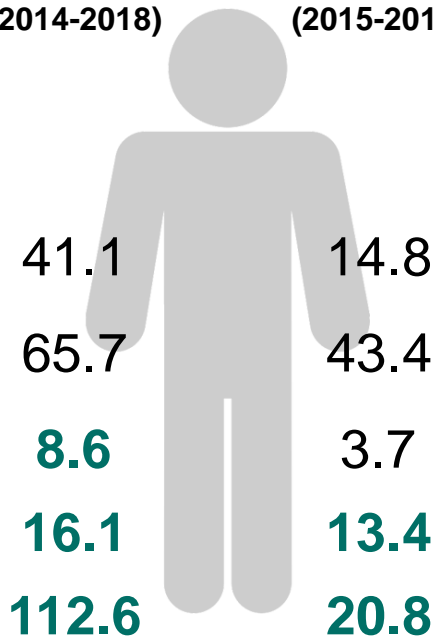
	Invasive Incidence Rate (2014-2018)		Mortality Rate (2015-2019)	
	WI	U.S.	WI	U.S.
Female Breast	132.9	126.9	18.5	19.9
Cervical	6.6	7.7	1.6	2.2
Colorectal	36.5	36.5	12.5	13.4
Lung & Bronchus	58.8	57.3	37.0	36.7
Myeloma	6.9	7.0	3.1	3.2
Pancreatic	13.7	13.1	11.5	11.1
Prostate	112.6	106.4	20.8	18.9

Invasive Incidence & Mortality Rates by Gender in Wisconsin

Rates in **Green** represent rates higher than the national average

**Incidence
Rate
(2014-2018)**

**Mortality
Rate
(2015-2019)**



**Incidence
Rate
(2014-2018)**

**Mortality
Rate
(2015-2019)**

Female Breast

Cervical

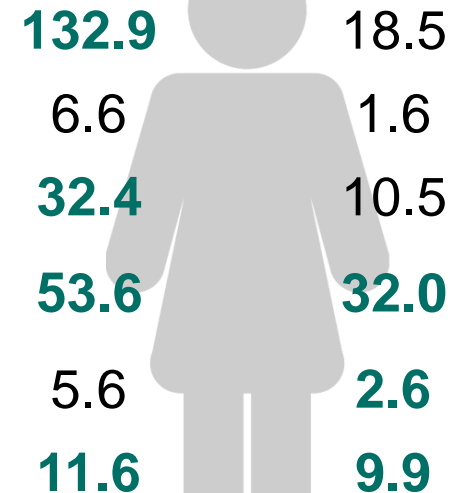
Colorectal

**Lung &
Bronchus**

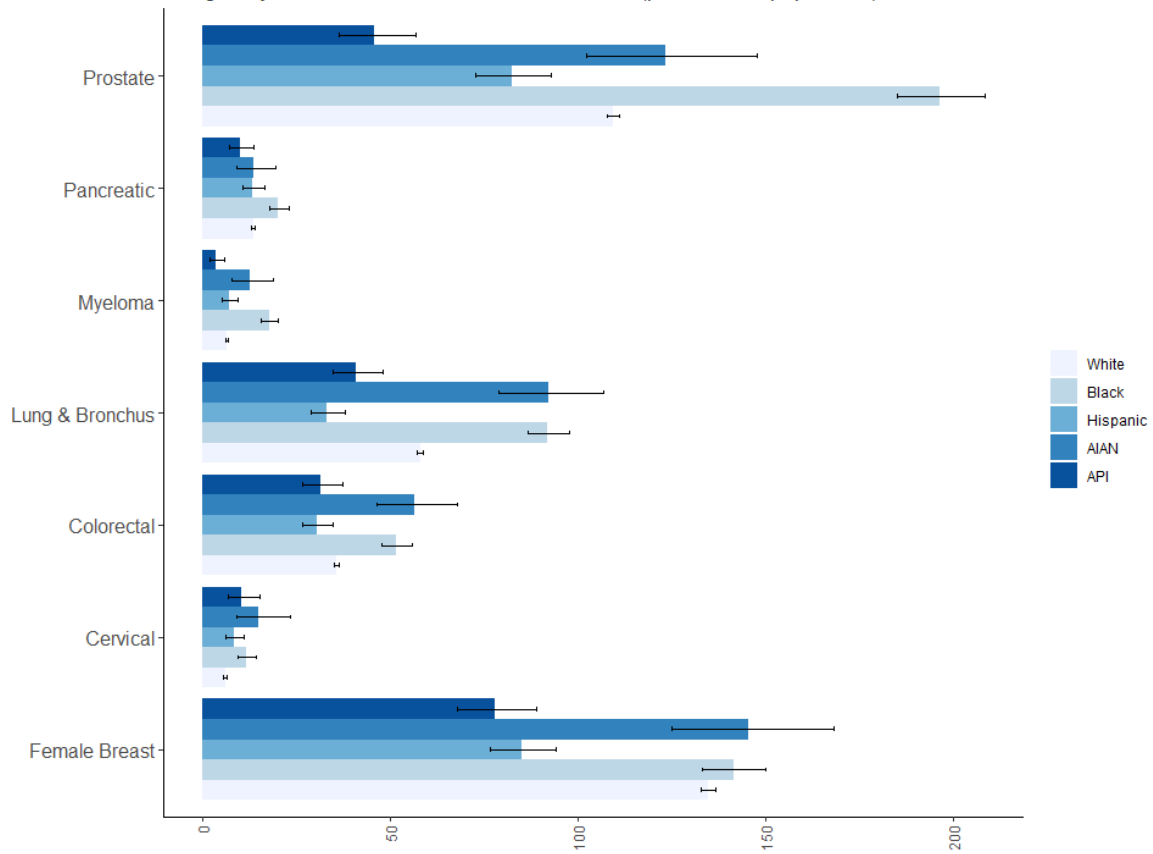
Myeloma

Pancreatic

Prostate



Age-Adjusted Invasive Cancer Incidence Rate (per 100,000 population), 2014-2018



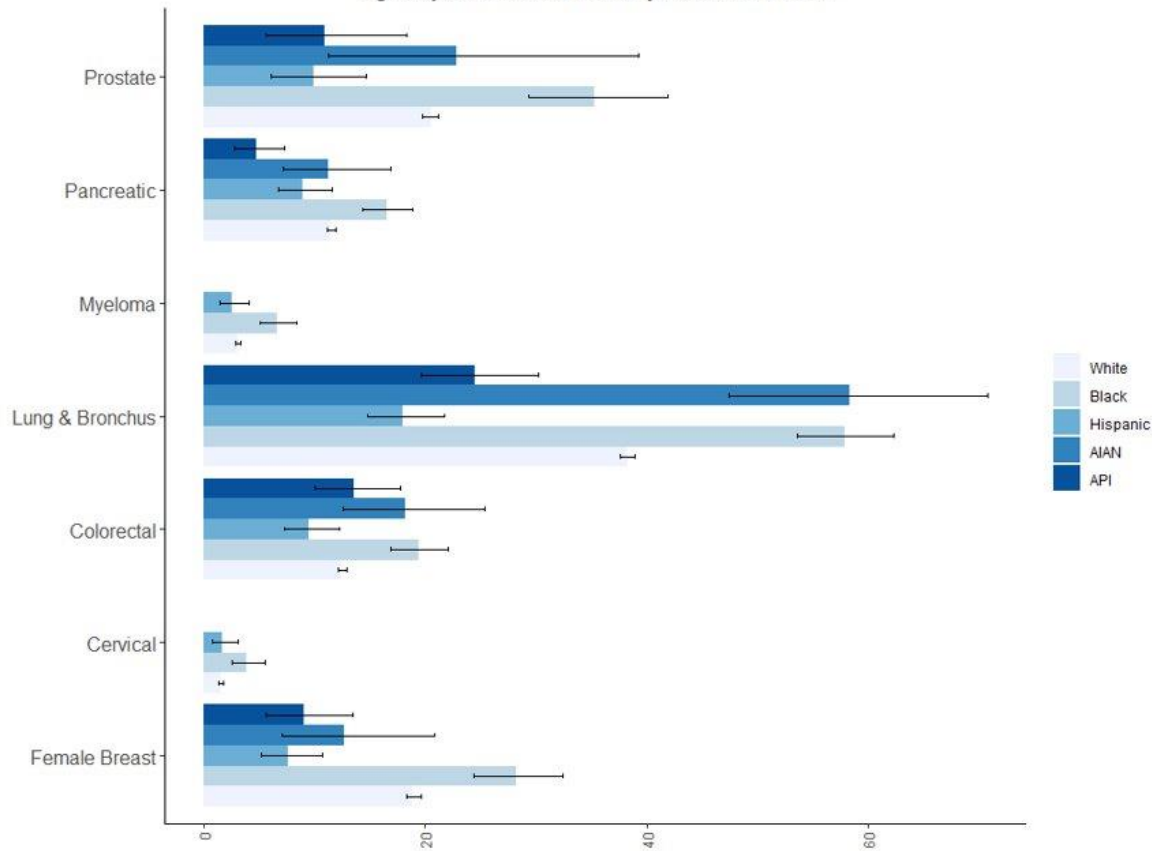
Data: Wisconsin Interactive Statistics on Health (WISH)
 Note: Denominator contains at-risk population

Age-Adjusted
 Invasive Cancer
 Incidence Rate
 (per 100,000
 population) in
 Wisconsin,
 2014-2018



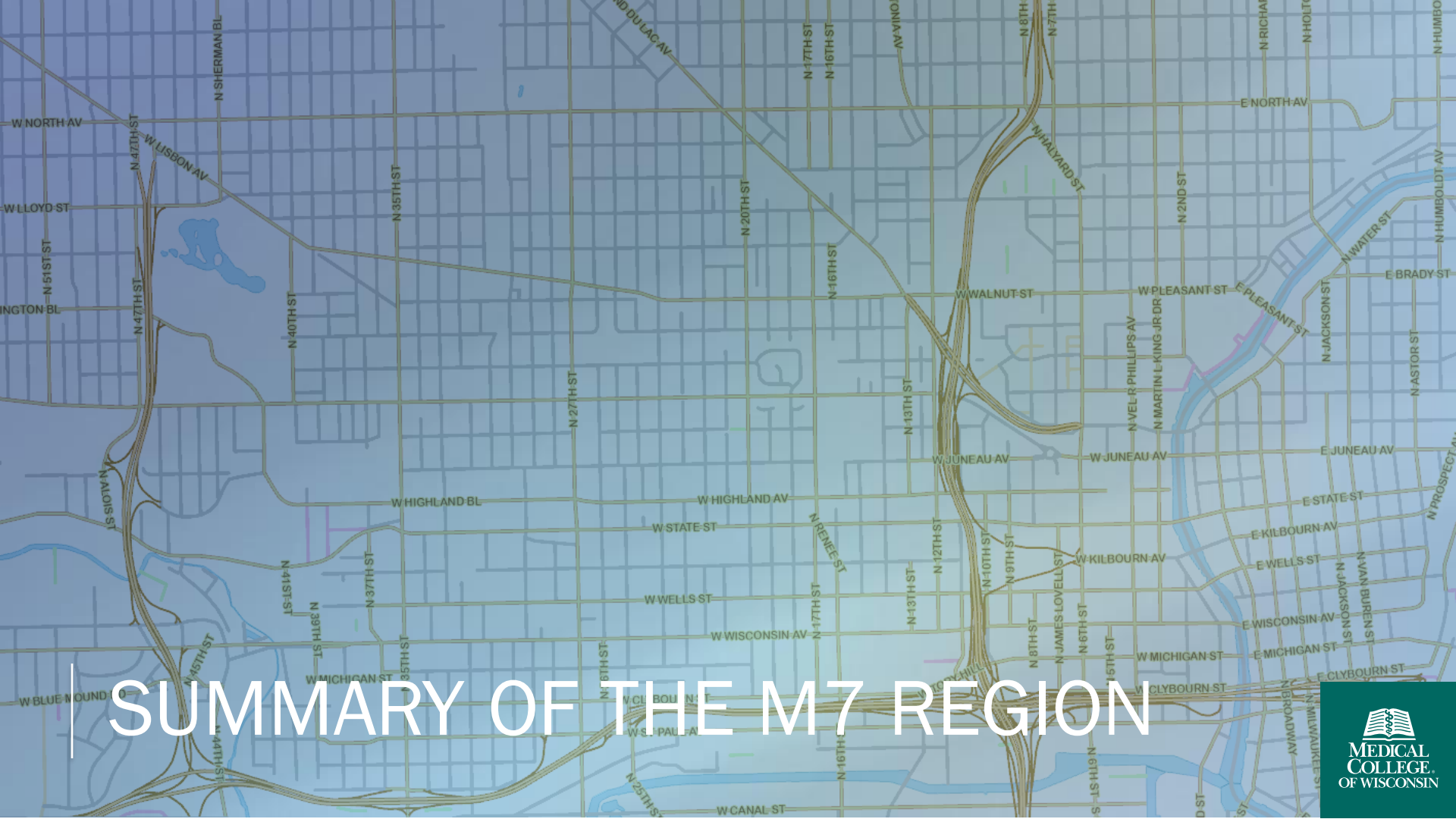
knowledge changing life

Age-Adjusted Cancer Mortality Rate, 2014-2018



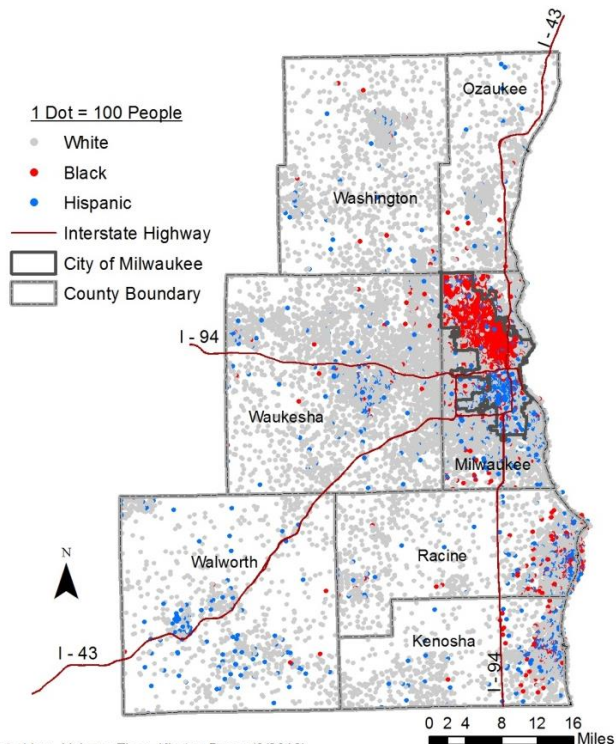
Data: Wisconsin Interactive Statistics on Health (WISH)
Note: Denominator contains at-risk population

Age-Adjusted
Invasive Cancer
Mortality Rate
(per 100,000
population) in
Wisconsin,
2014-2018



SUMMARY OF THE M7 REGION

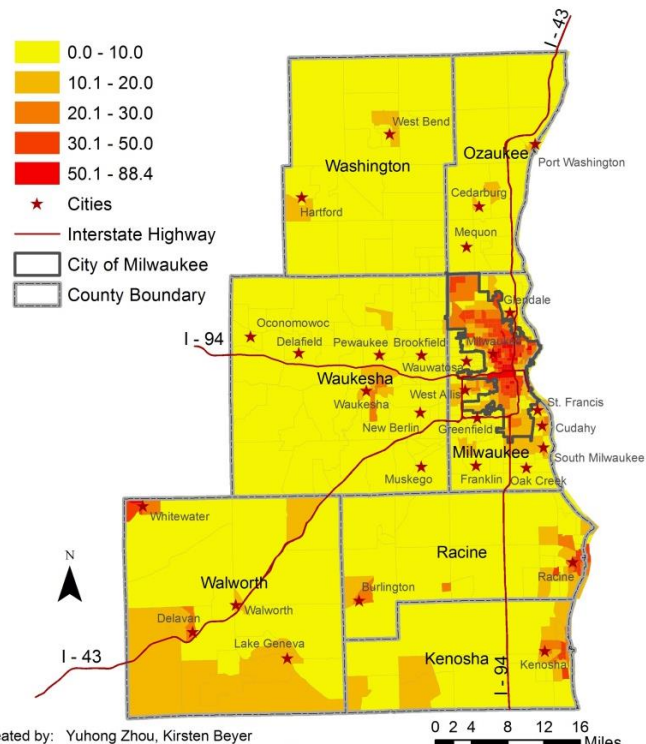
Population by Race/Ethnicity by Census Tract, MCW Cancer Center Catchment Area 2009 - 2013



Created by: Yuhong Zhou, Kirsten Beyer (3/2016)

Data Source: 2009-2013 American Community Survey 5-Year Estimates by US Census Bureau

Percentage of the Population with Income Below the Poverty Level by Census Tract, MCW Cancer Center Catchment Area 2009-2013



Created by: Yuhong Zhou, Kirsten Beyer

Medical College of Wisconsin (3/2016)

Data Source: 2009-2013 American Community Survey 5-Year Estimates by US Census Bureau

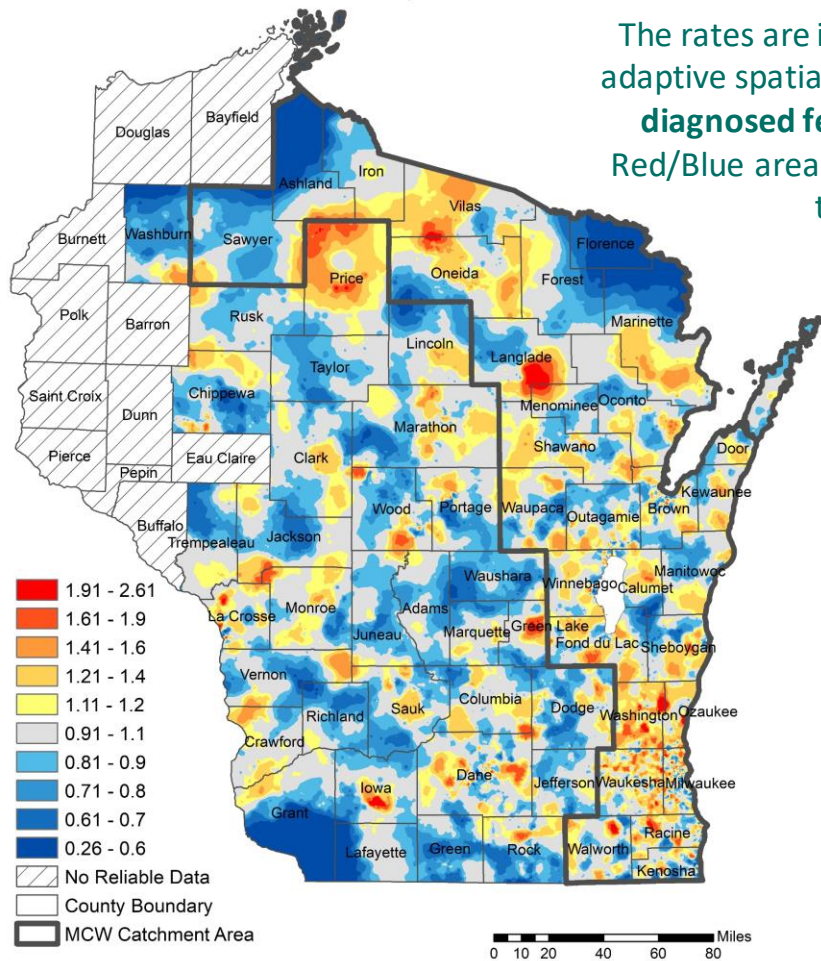
**“Back in time 60 years’:
America’s most
segregated city”**
Toronto Star, Jan 25,
2016

Employment Rate	
Black	58%
White	88%
Poverty rate	
Black	39%
White	8%
Residents living in extreme-poverty neighborhoods	
Black	32.9%
White	1.6%
Adult male incarceration rate	
Black	11.9%
White	0.9%
Median household income	
Black	\$26,036
White	\$62,100
Average poverty rate of school attended by a student who is...	
Black	78.1%
White	24.2%

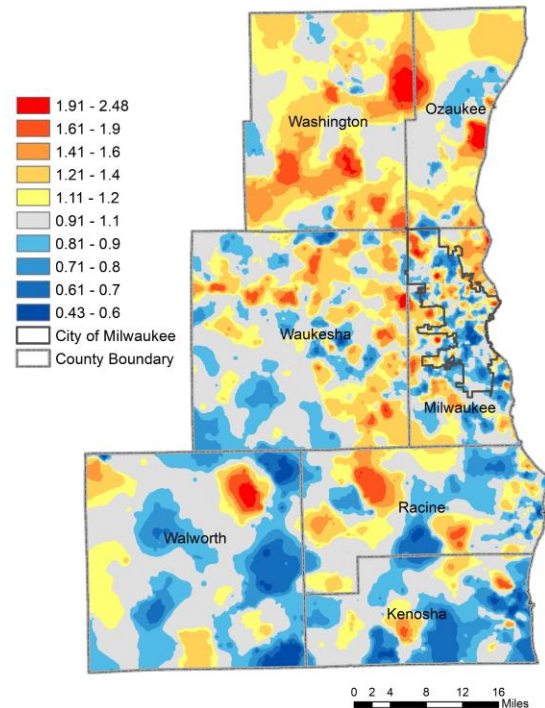
| SITE SPECIFIC SPATIAL PATTERNS

Female Breast Cancer Incidence Rate Wisconsin, 2014-2019

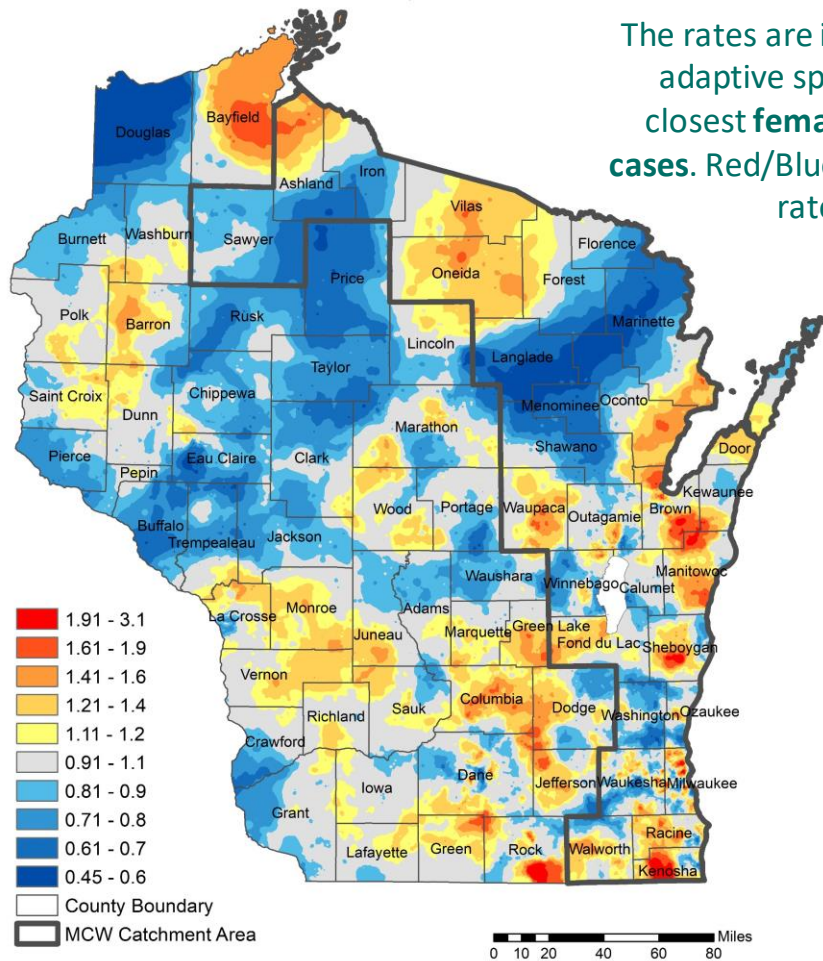
The rates are indirectly age adjusted using adaptive spatial filtering based on 20 closest **diagnosed female breast cancer cases**.
Red/Blue areas indicate higher/lower rates than expected.



Female Breast Cancer Incidence Rate Southeastern Wisconsin, 2014-2019

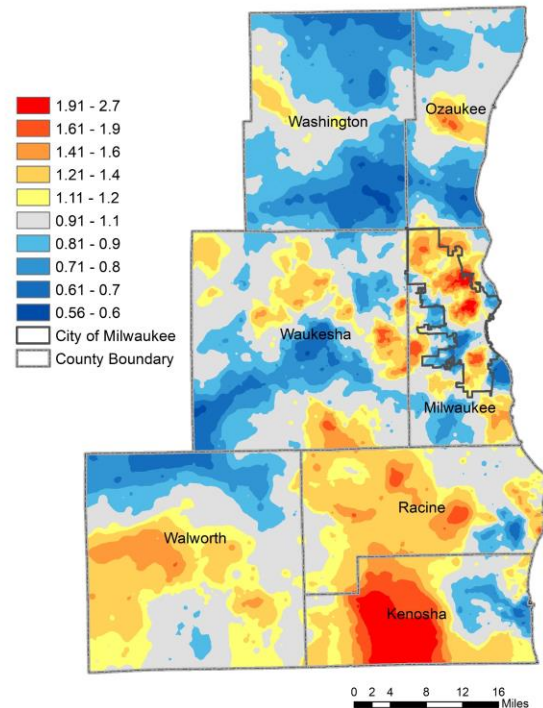


Female Breast Cancer Mortality Rate Wisconsin, 2015-2020

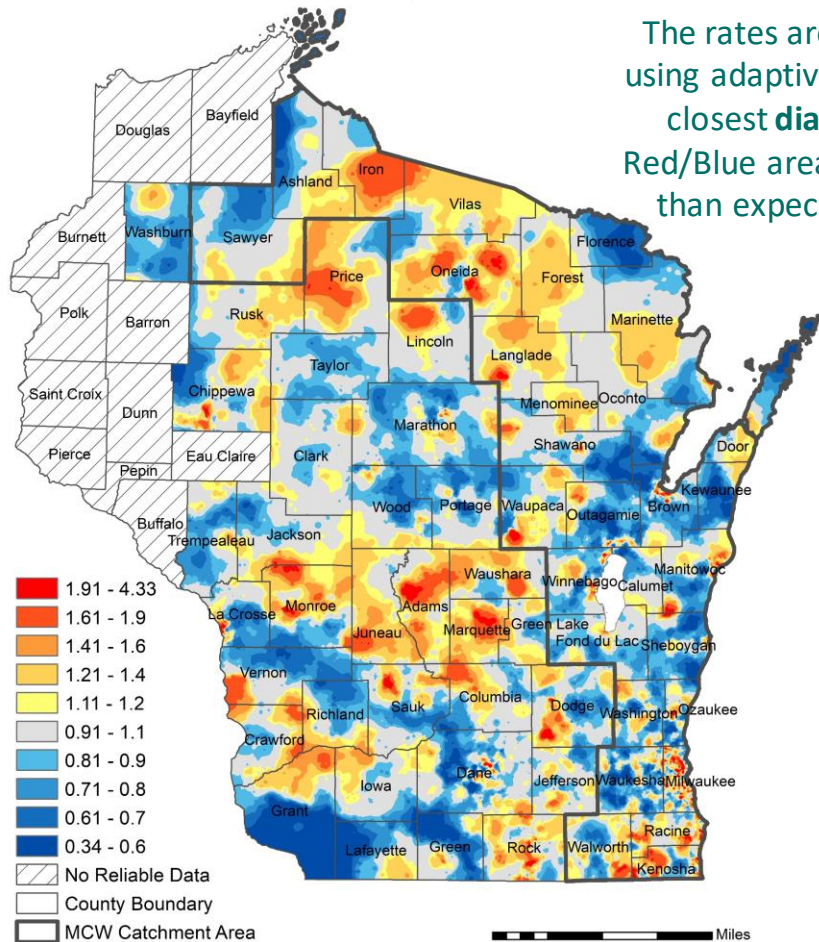


The rates are indirectly age adjusted using adaptive spatial filtering based on 20 closest **female breast cancer mortality cases**. Red/Blue areas indicate higher/lower rates than expected.

Female Breast Cancer Mortality Rate Southeastern Wisconsin, 2015-2020

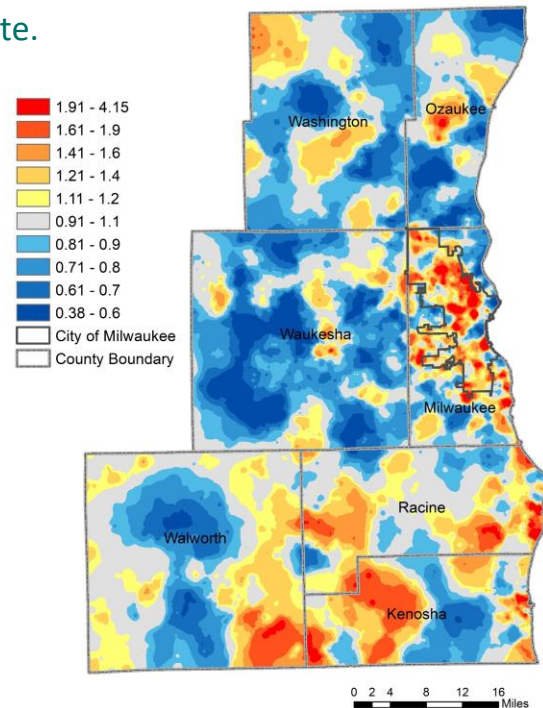


Lung Cancer Incidence Rate Wisconsin, 2014-2019

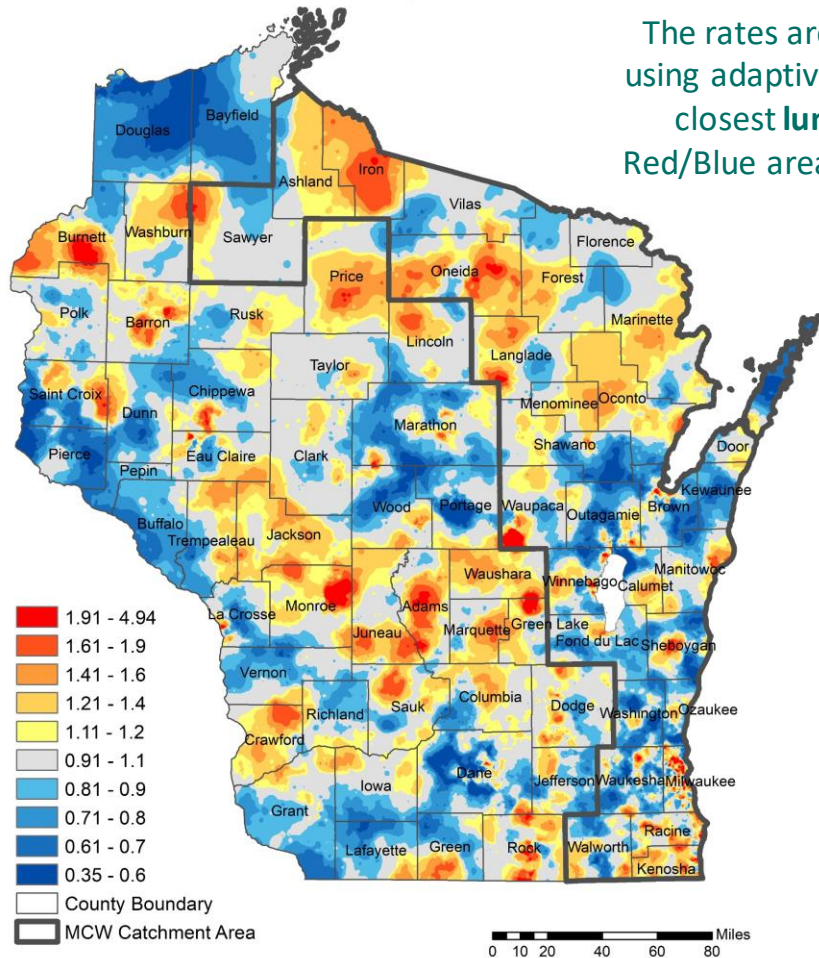


The rates are indirectly age-sex adjusted using adaptive spatial filtering based on 20 closest **diagnosed lung cancer cases**. Red/Blue areas indicate higher/lower rates than expected given the regional rate.

Lung Cancer Incidence Rate Southeastern Wisconsin, 2014-2019

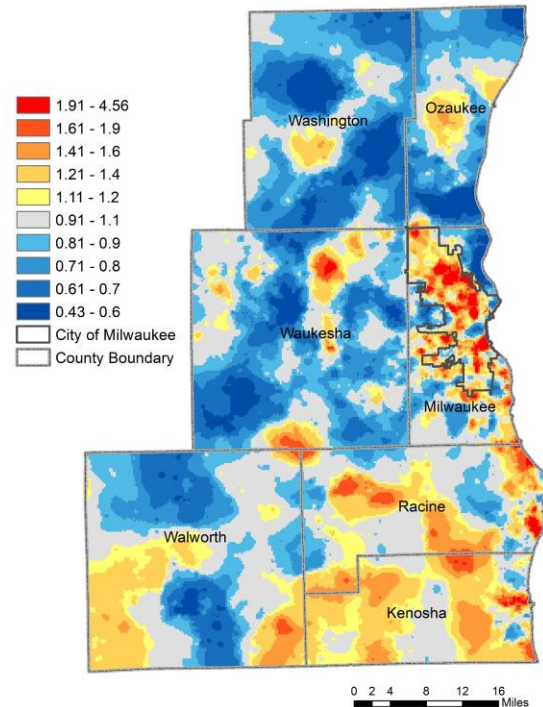


Lung Cancer Mortality Rate Wisconsin, 2015-2020



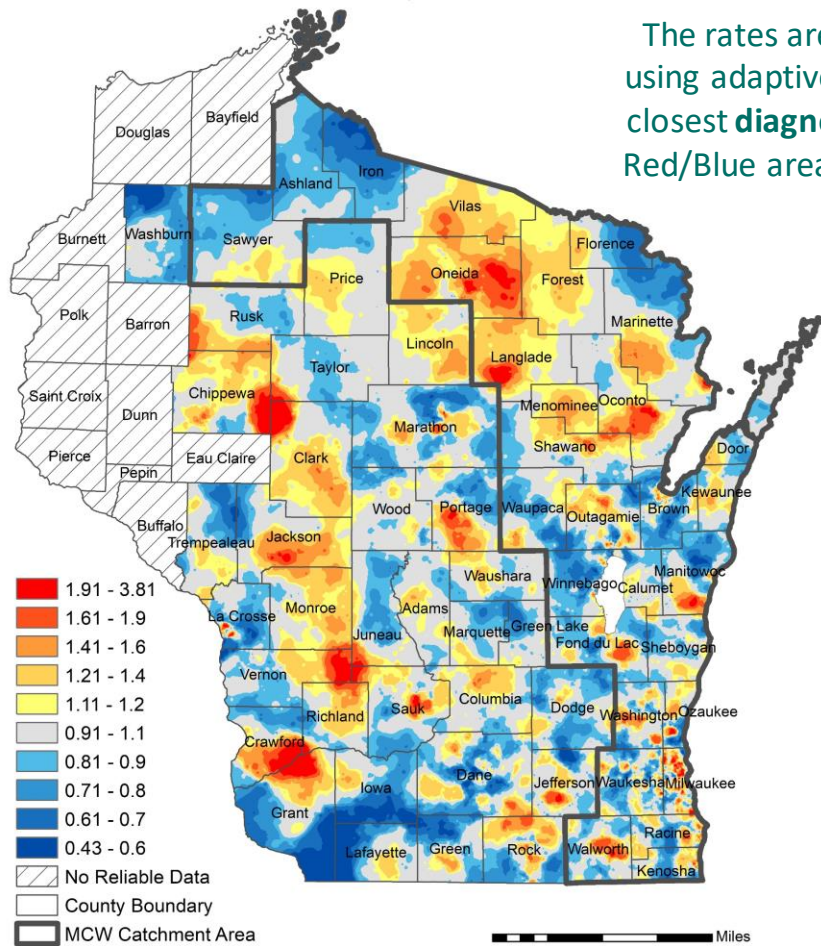
The rates are indirectly age-sex adjusted using adaptive spatial filtering based on 20 closest **lung cancer mortality cases**. Red/Blue areas indicate higher/lower rates than expected.

Lung Cancer Mortality Rate Southeastern Wisconsin, 2015-2020

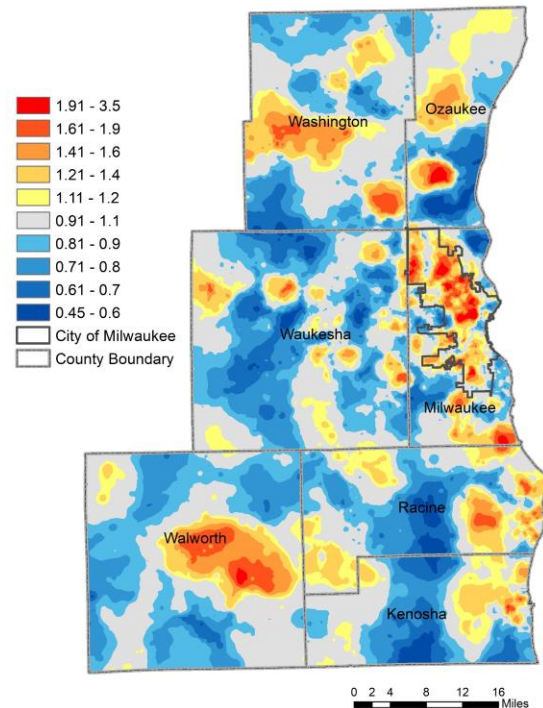


Colorectal Cancer Incidence Rate Wisconsin, 2014-2019

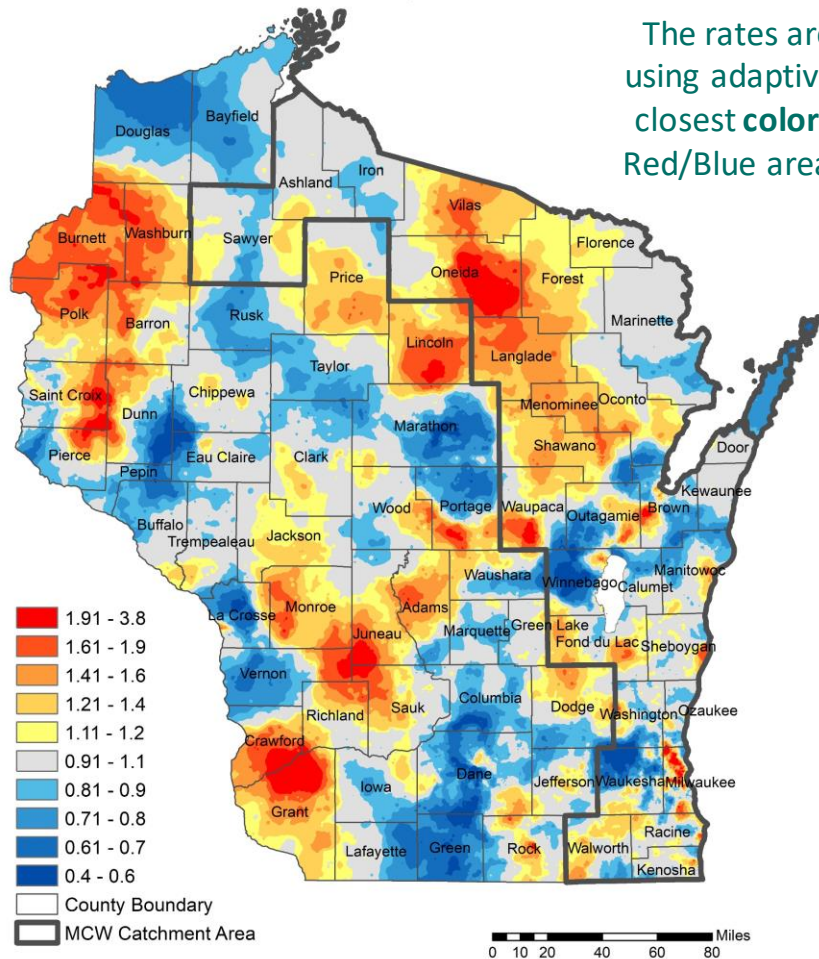
The rates are indirectly age-sex adjusted using adaptive spatial filtering based on 20 closest **diagnosed colorectal cancer cases**. Red/Blue areas indicate higher/lower rates than expected.



Colorectal Cancer Incidence Rate
Southeastern Wisconsin, 2014-2019

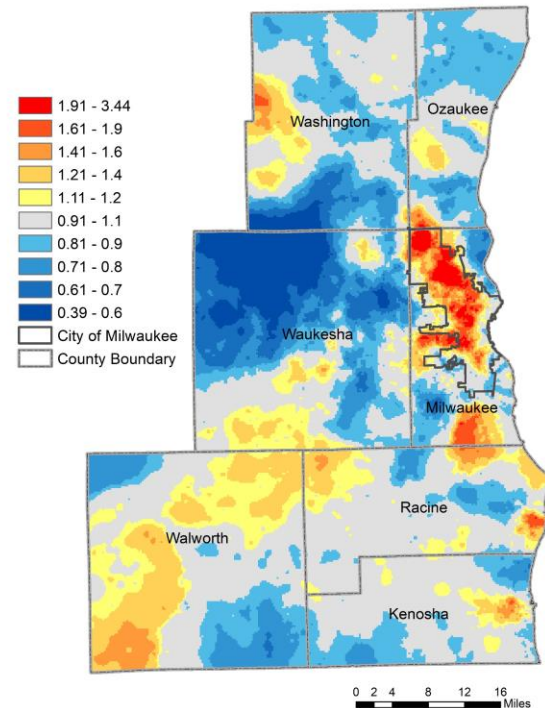


Colorectal Cancer Mortality Rate Wisconsin, 2015-2020



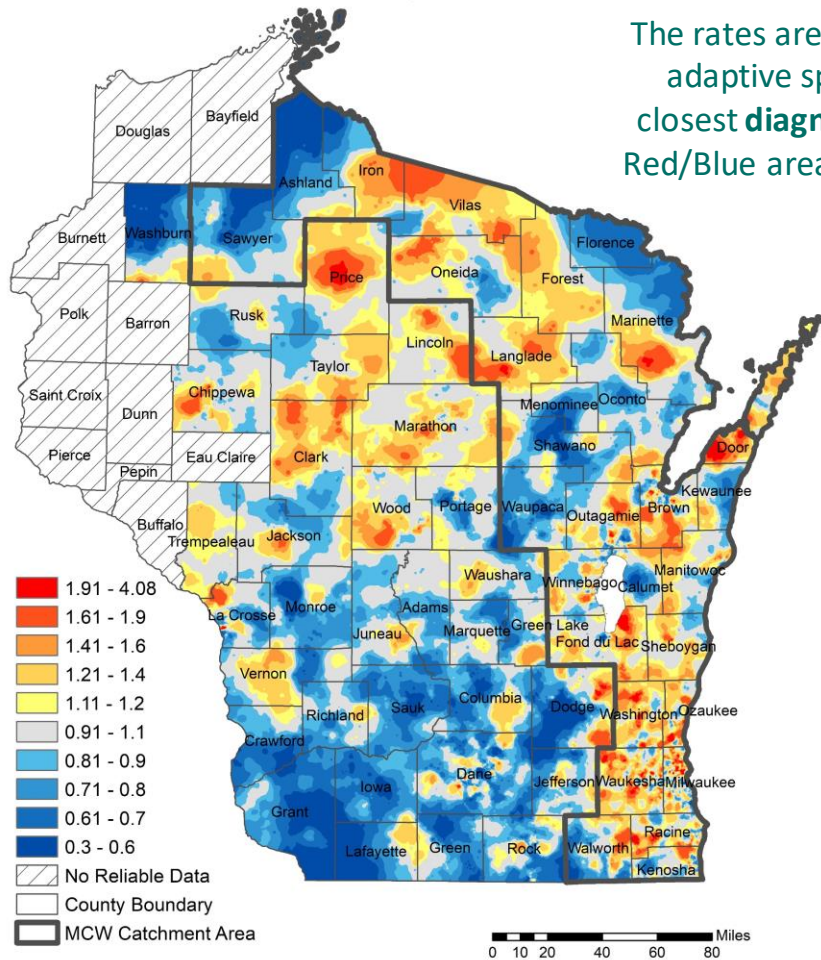
The rates are indirectly age-sex adjusted using adaptive spatial filtering based on 20 closest **colorectal cancer mortality cases**. Red/Blue areas indicate higher/lower rates than expected.

Colorectal Cancer Mortality Rate Southeastern Wisconsin, 2015-2020

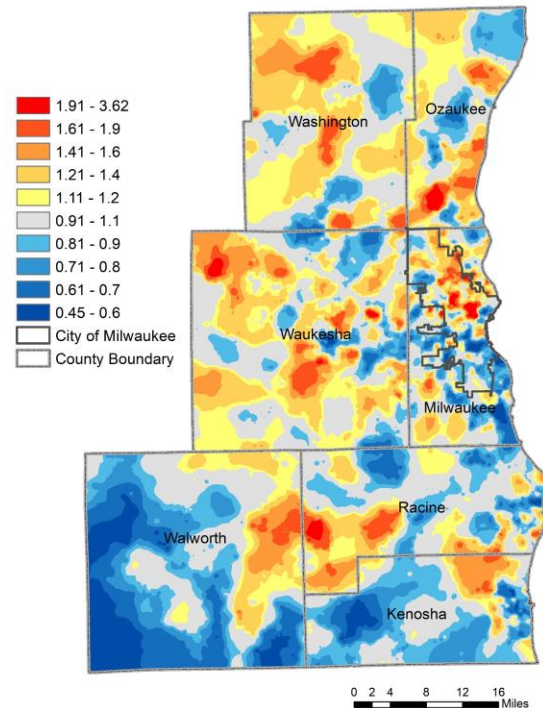


Prostate Cancer Incidence Rate Wisconsin, 2014-2019

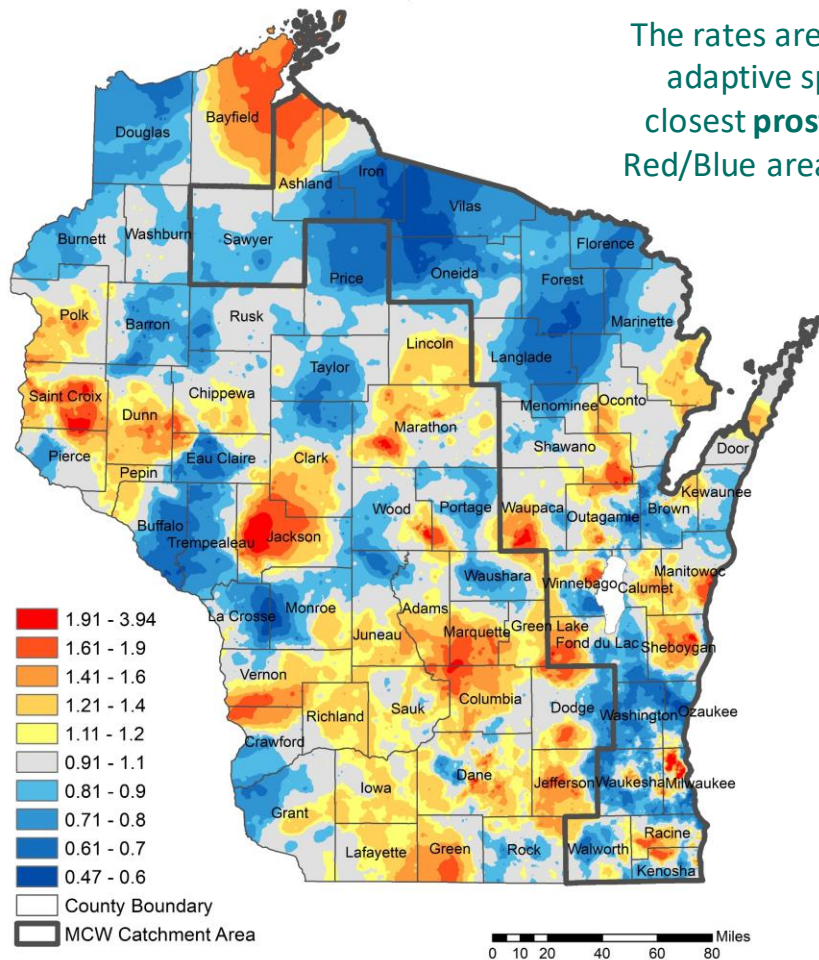
The rates are indirectly age adjusted using adaptive spatial filtering based on 20 closest **diagnosed prostate cancer cases**. Red/Blue areas indicate higher/lower rates than expected.



Prostate Cancer Incidence Rate Southeastern Wisconsin, 2014-2019

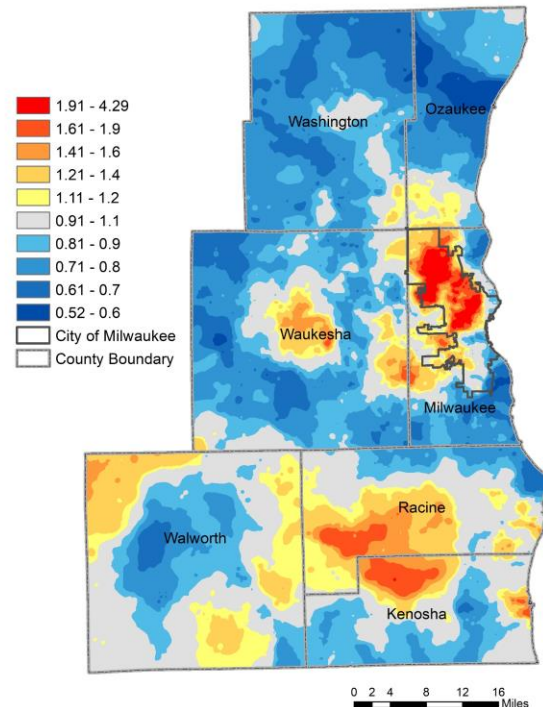


Prostate Cancer Mortality Rate Wisconsin, 2015-2020



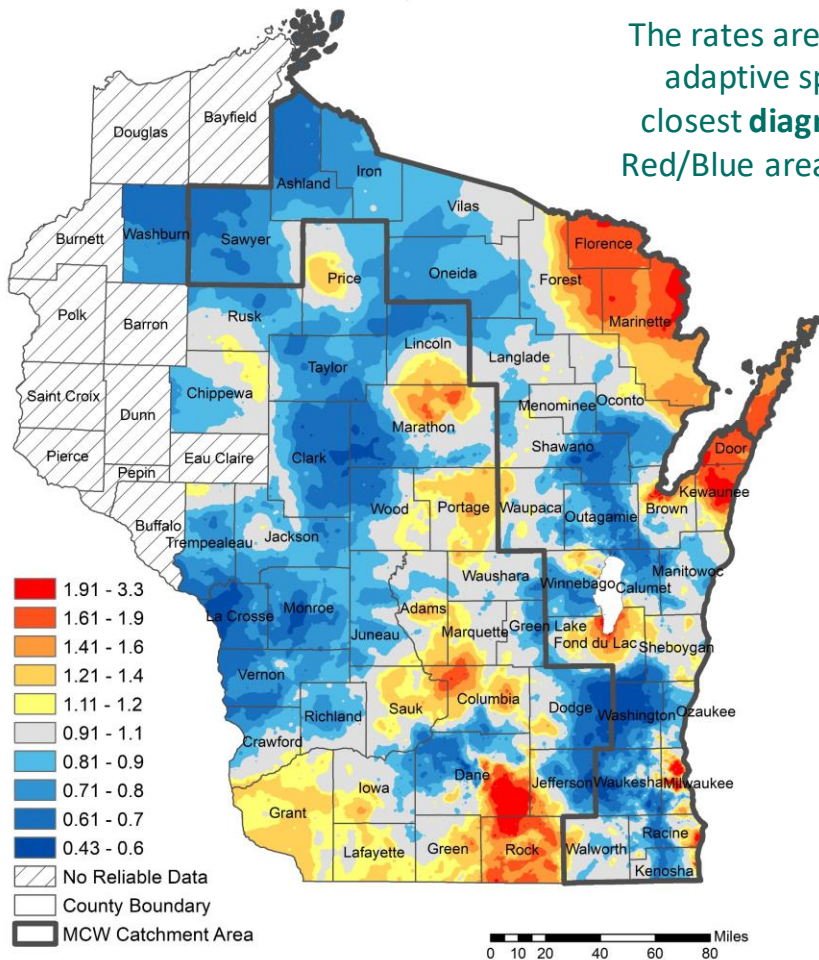
The rates are indirectly age adjusted using adaptive spatial filtering based on 20 closest **prostate cancer mortality cases**. Red/Blue areas indicate higher/lower rates than expected.

Prostate Cancer Mortality Rate Southeastern Wisconsin, 2015-2020

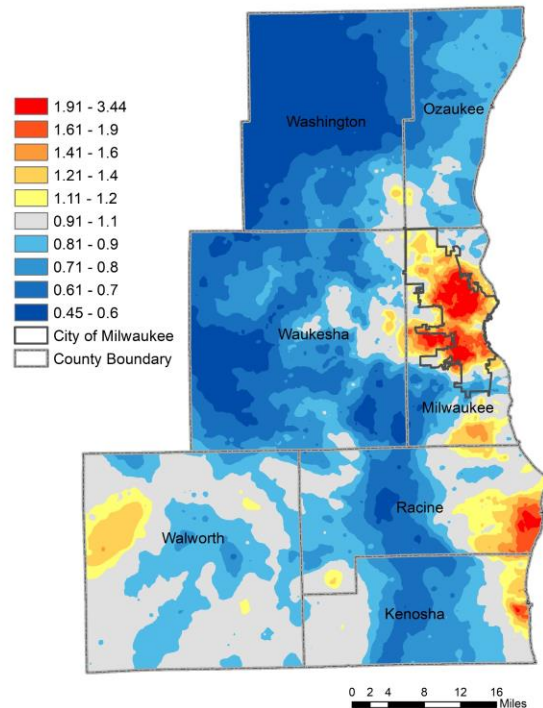


Cervical Cancer Incidence Rate Wisconsin, 2014-2019

The rates are indirectly age adjusted using adaptive spatial filtering based on 15 closest **diagnosed cervical cancer cases**. Red/Blue areas indicate higher/lower rates than expected.



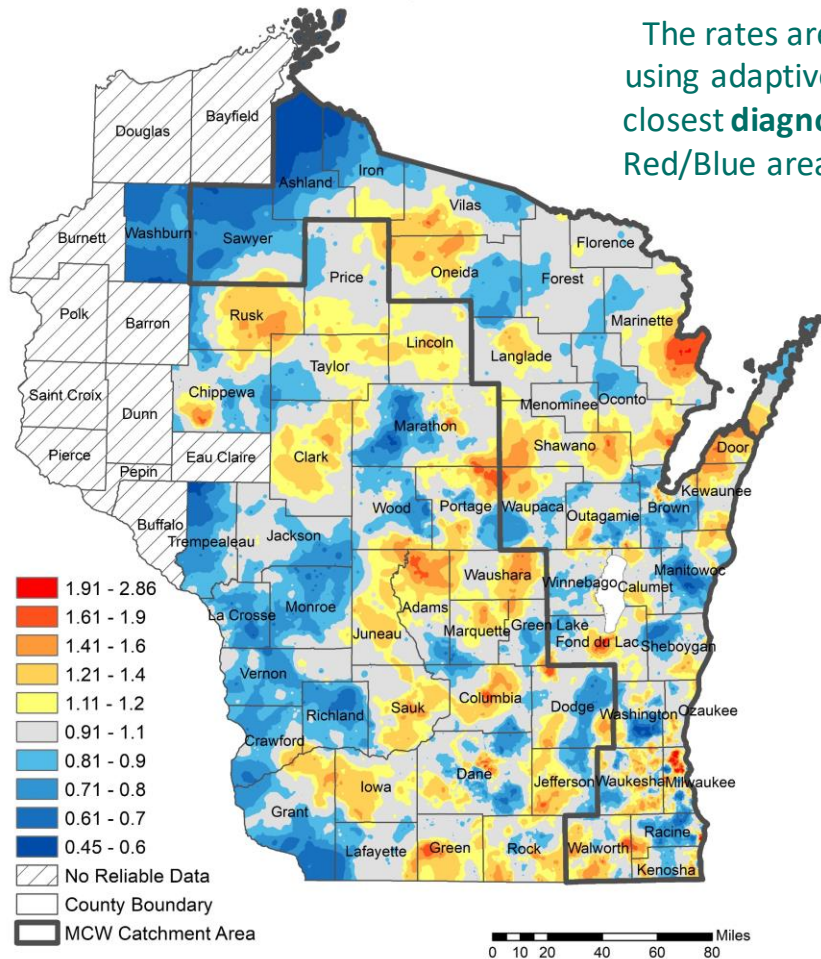
Cervical Cancer Incidence Rate Southeastern Wisconsin, 2014-2019



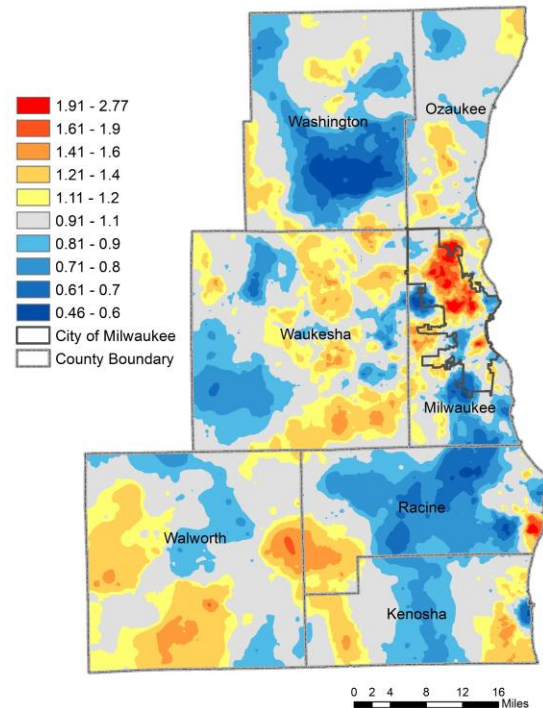
NO cervical cancer mortality map available due to small numbers

Pancreatic Cancer Incidence Rate Wisconsin, 2014-2019

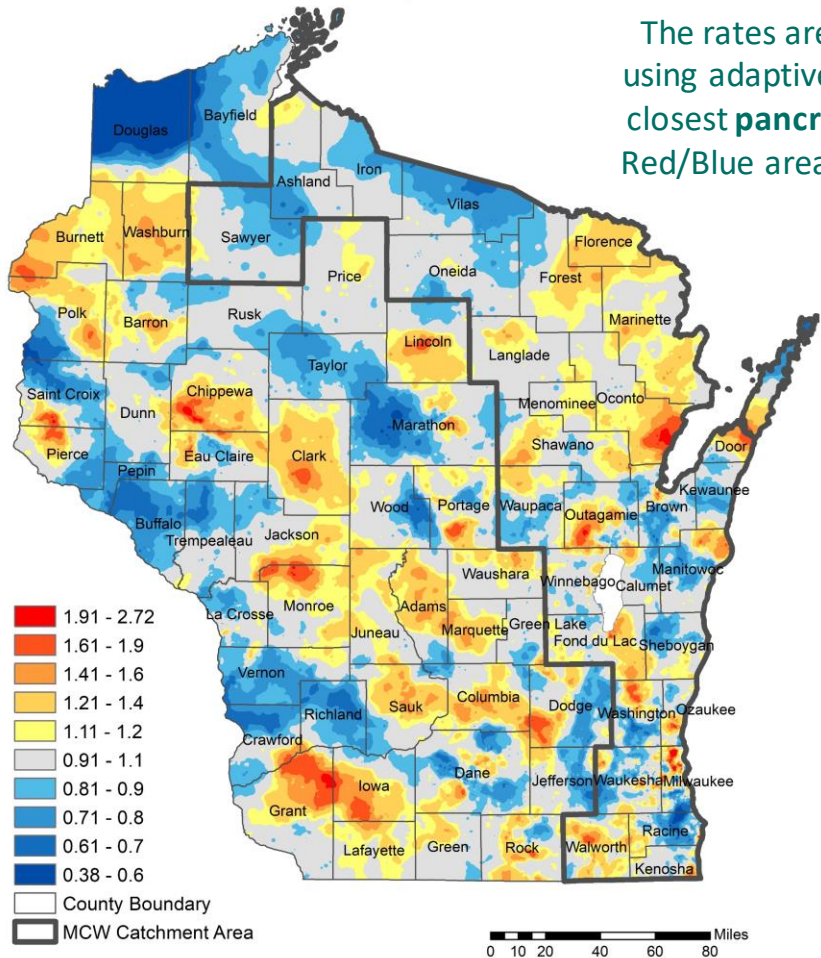
The rates are indirectly age-sex adjusted using adaptive spatial filtering based on 20 closest **diagnosed pancreatic cancer cases**. Red/Blue areas indicate higher/lower rates than expected.



Pancreatic Cancer Incidence Rate Southeastern Wisconsin, 2014-2019

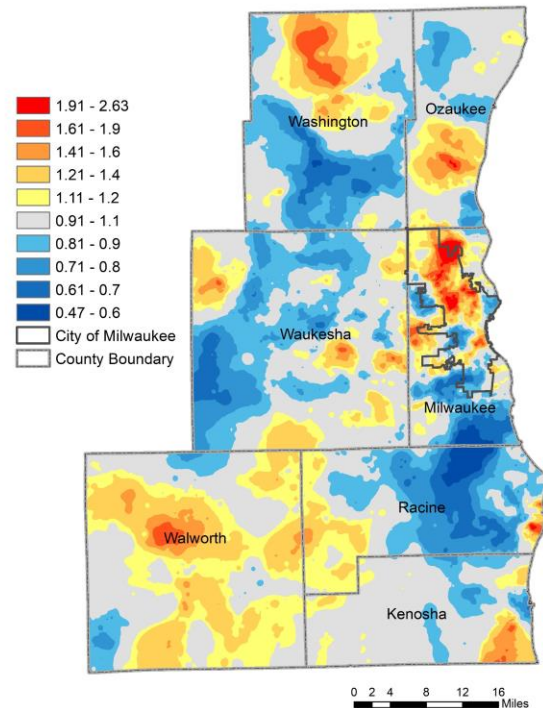


Pancreatic Cancer Mortality Rate Wisconsin, 2015-2020



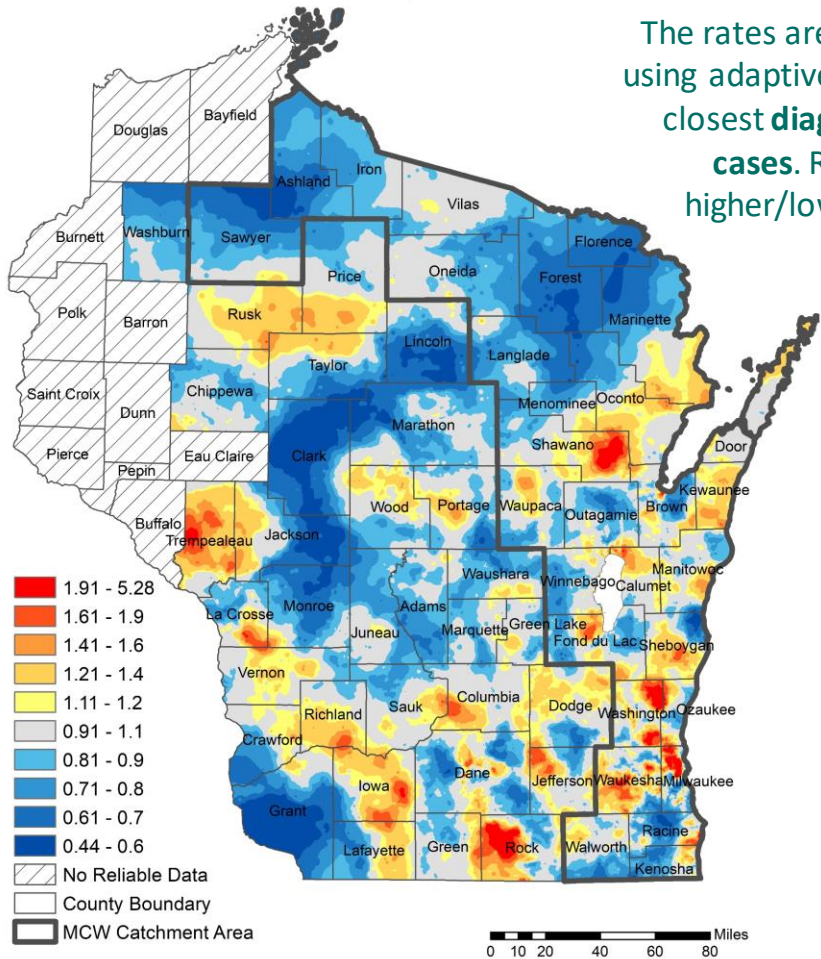
The rates are indirectly age-sex adjusted using adaptive spatial filtering based on 20 closest **pancreatic cancer mortality cases**. Red/Blue areas indicate higher/lower rates than expected.

Pancreatic Cancer Mortality Rate Southeastern Wisconsin, 2015-2020

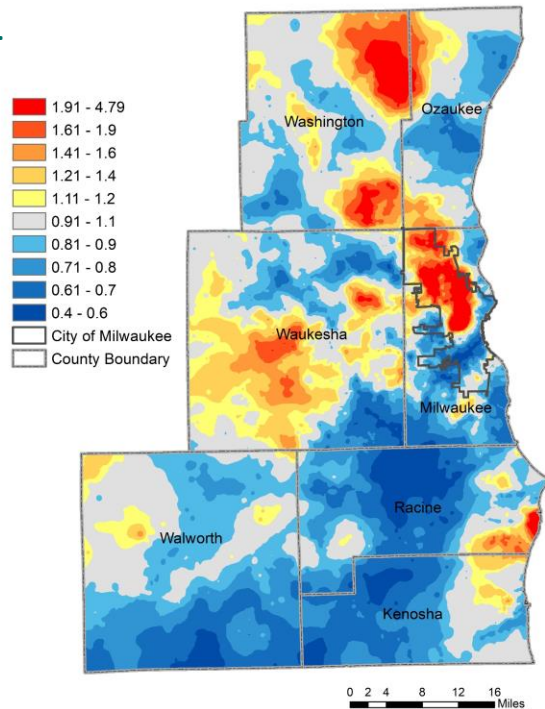


Multiple Myeloma Incidence Rate Wisconsin, 2014-2019

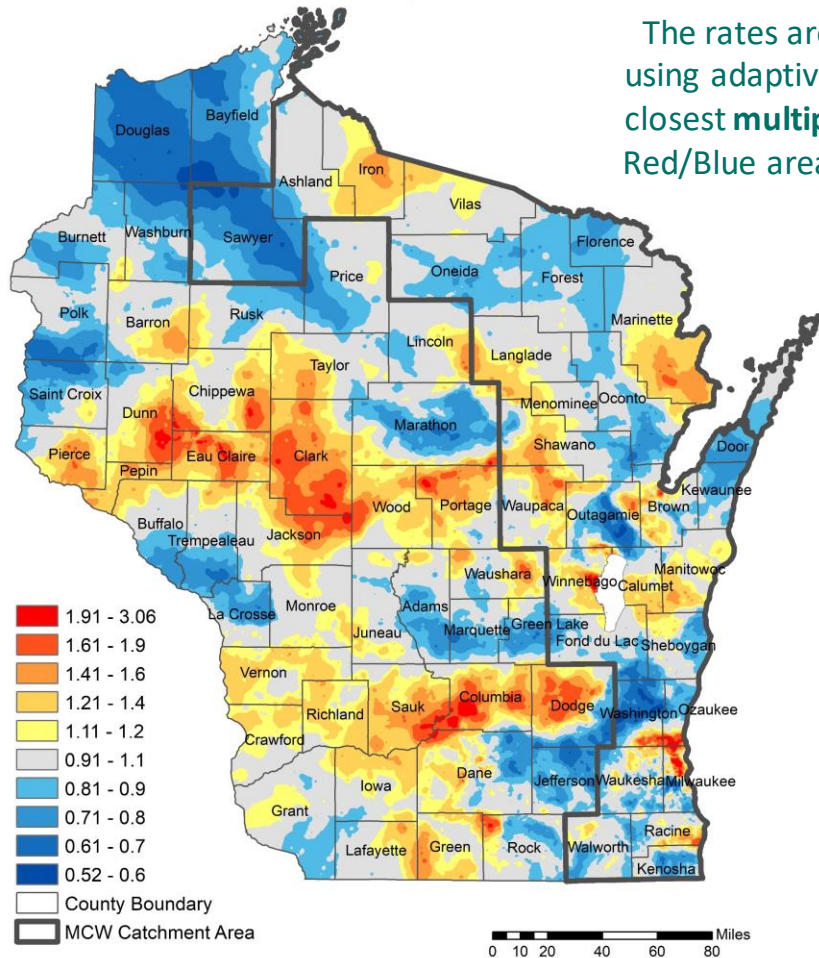
The rates are indirectly age-sex adjusted using adaptive spatial filtering based on 15 closest **diagnosed multiple myeloma cases**. Red/Blue areas indicate higher/lower rates than expected.



Multiple Myeloma Incidence Rate Southeastern Wisconsin, 2014-2019

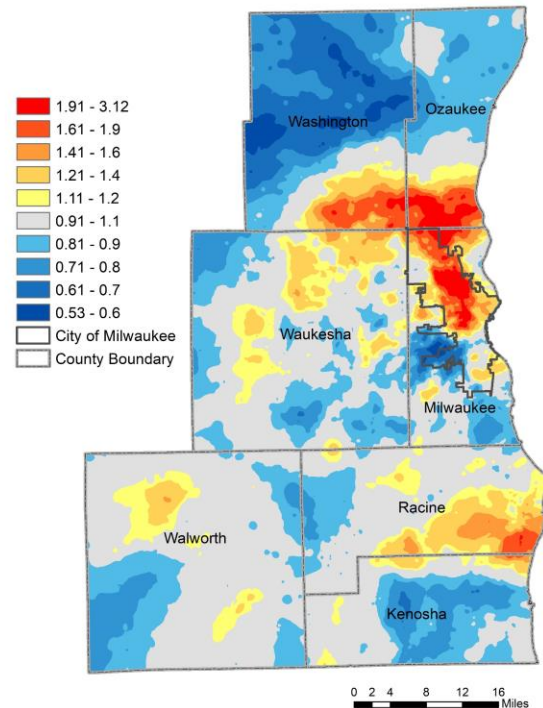


Multiple Myeloma Mortality Rate Wisconsin, 2015-2020



The rates are indirectly age-sex adjusted using adaptive spatial filtering based on 15 closest **multiple myeloma mortality cases**. Red/Blue areas indicate higher/lower rates than expected.

Multiple Myeloma Mortality Rate Southeastern Wisconsin, 2015-2020





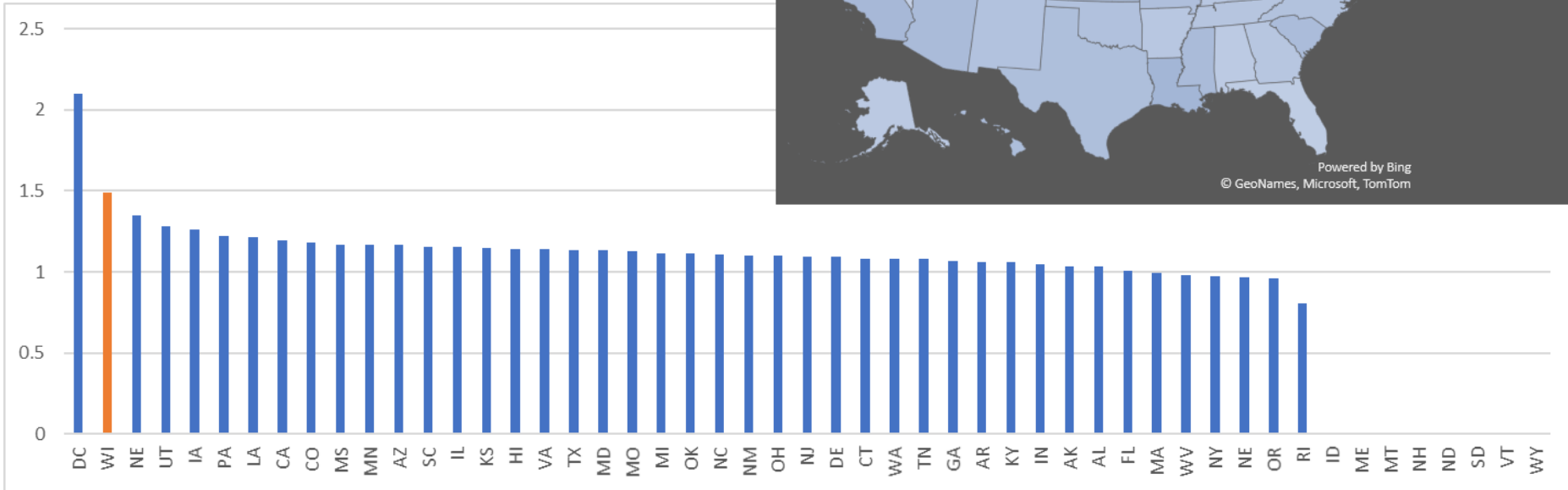
HOW DO OUR DISPARITIES COMPARE?

Black to White Cancer Mortality Disparities (Mortality Rate Ratio)

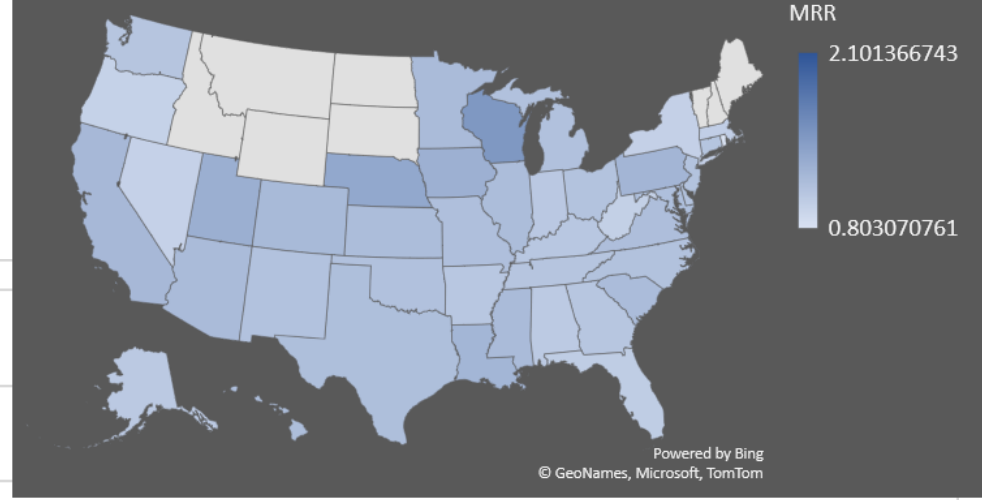
Kaiser Family Foundation

Number of Cancer Deaths per 100,000 Population by Race/Ethnicity, 2020

<https://www.kff.org/other/state-indicator/death-rate-by-raceethnicity>



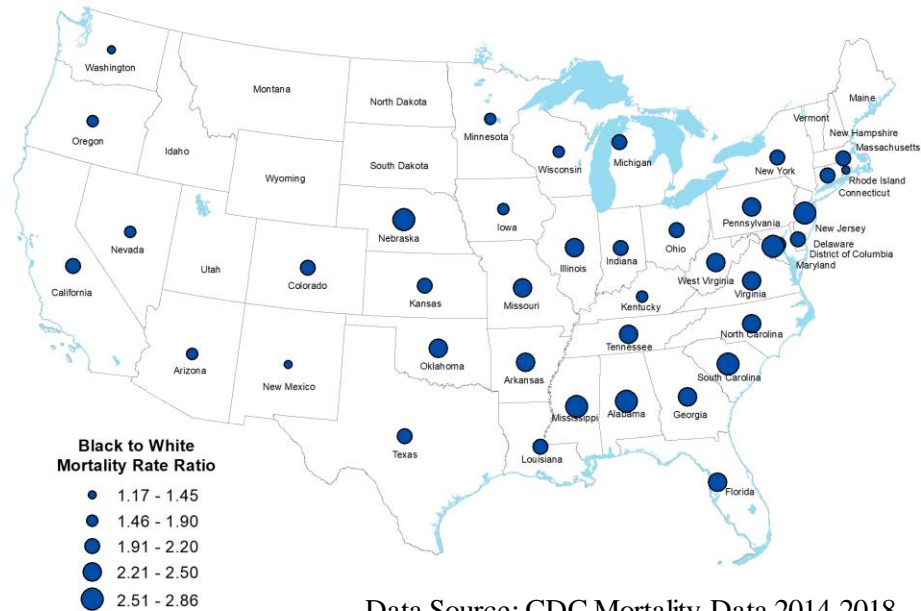
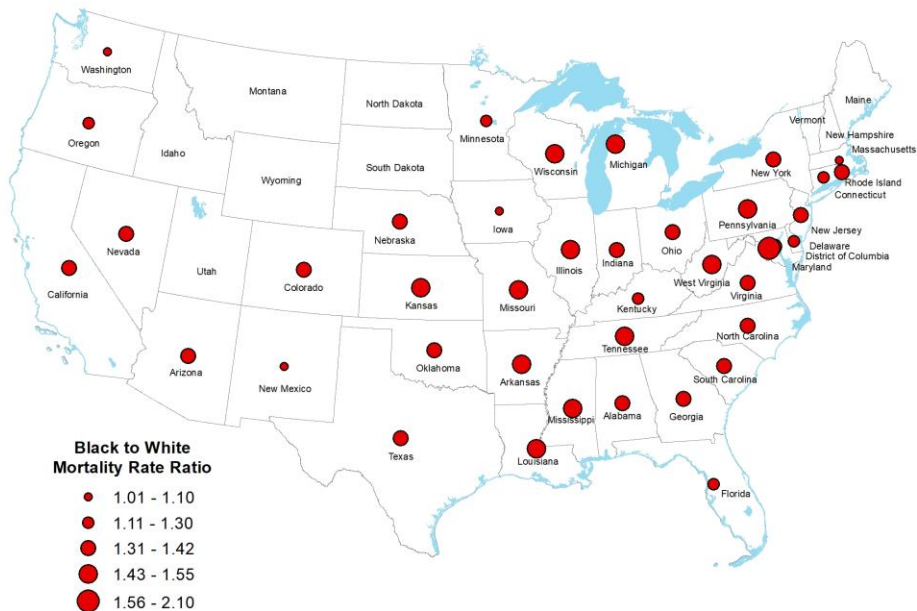
Cancer Mortality Rate Ratios by State (Black: White)



BLACK TO WHITE MORTALITY RATE RATIO

Breast Cancer
Wisconsin Ranks #7

Prostate Cancer
Wisconsin Ranks #35

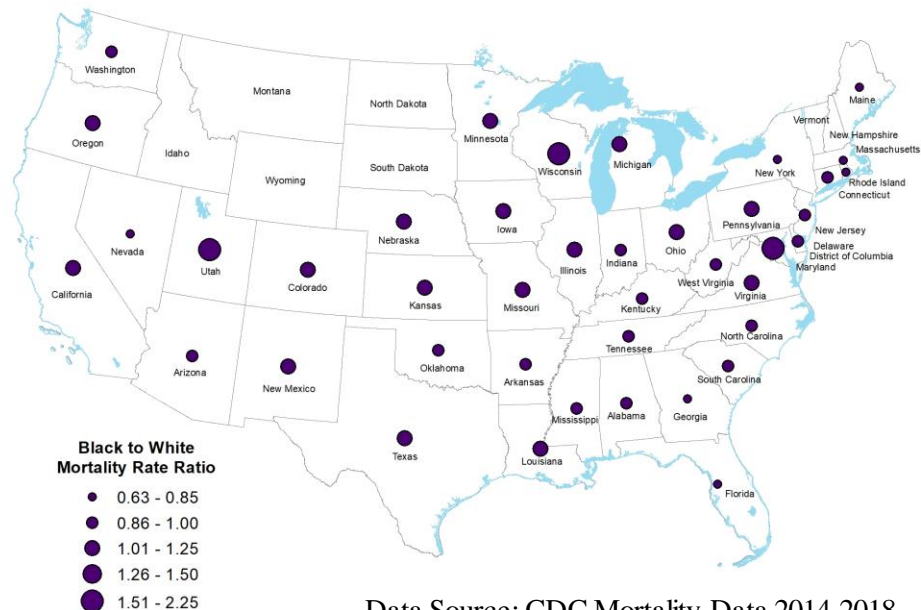
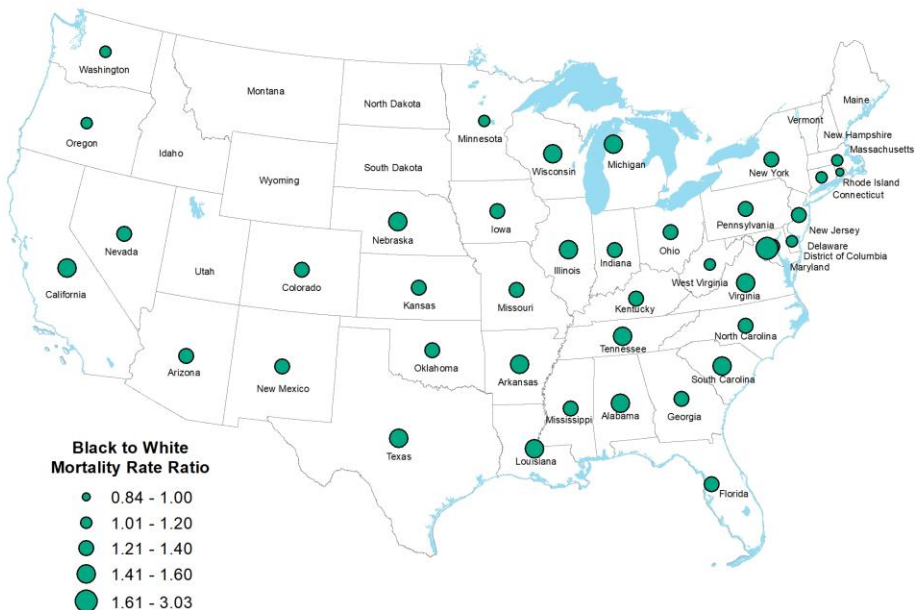


Data Source: CDC Mortality Data 2014-2018

BLACK TO WHITE MORTALITY RATE RATIO

Colorectal Cancer
Wisconsin Ranks #3

Lung Cancer
Wisconsin Ranks #3

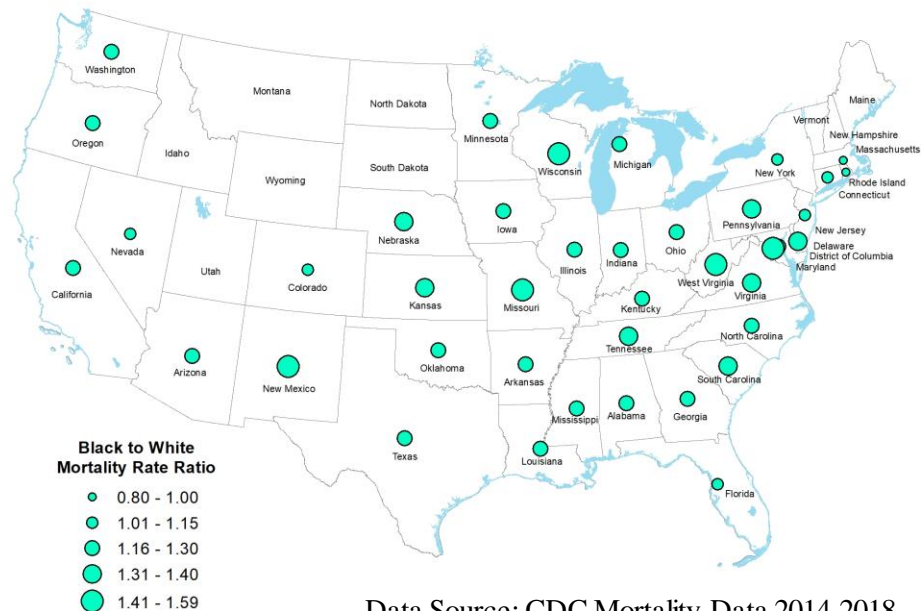
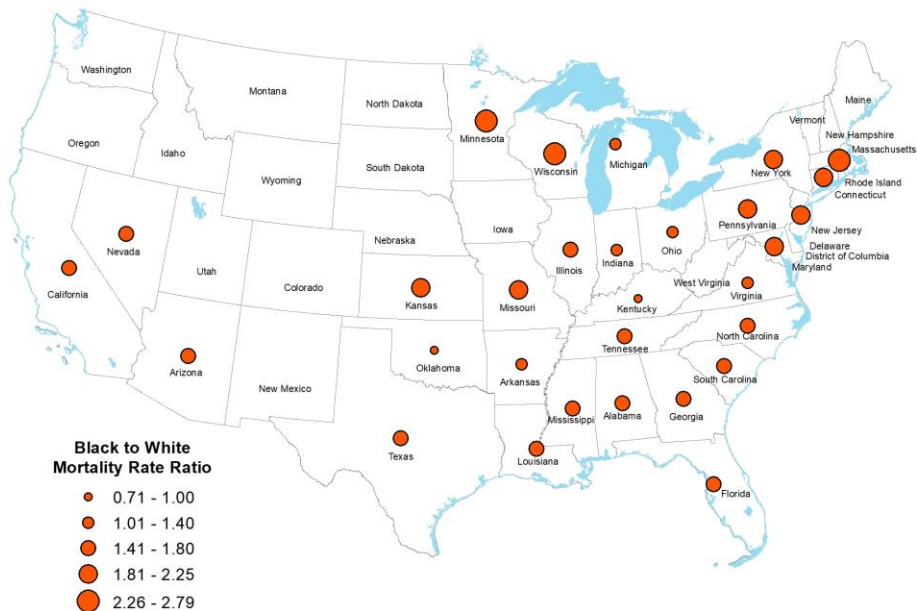


Data Source: CDC Mortality Data 2014-2018

BLACK TO WHITE MORTALITY RATE RATIO

Cervical Cancer
Wisconsin Ranks #2

Pancreatic Cancer
Wisconsin Ranks #4

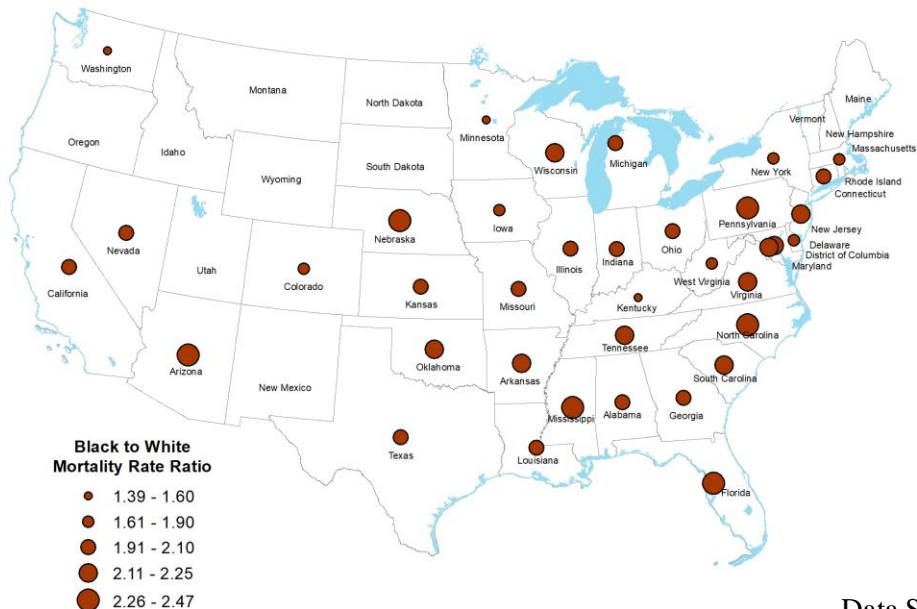


Data Source: CDC Mortality Data 2014-2018

BLACK TO WHITE MORTALITY RATE RATIO

Myeloma

Wisconsin Ranks #14



Data Source: CDC Mortality Data 2014-2018

Mission: To catalyze population-based cancer research, with an emphasis on cancer disparities, by providing access to population-based data, cancer epidemiology and database expertise, information on the cancer burden in the catchment area, and geospatial mapping and analysis.



geo@mcw.edu
www.mcw.edu/geo



Kirsten Beyer, PhD, MPH, MS
Geospatial/Epi



Bethany Canales, MPH
Statistician
Geospatial/Epi/Outcomes

CO-DIRECTORS



Tina Yen, MD, MS
Epi/Outcomes



Yuhong Zhou, PhD, MS, ME
Research Scientist
Geospatial/Epi

STAFF

kbeyer@mcw.edu

| QUESTIONS?

