

Integrating Age-Friendly Care into the Oncology Continuum

Authors: Bianca Alvarez¹, Elana Plotkin¹, Leigh Boehmer¹, Kristine Swartz², Samuel F. Sestito³, Ginah Nightingale²

¹Association of Community Cancer Centers, Rockville, MD; ²Thomas Jefferson University, Philadelphia, PA; ³Vanderbilt University Medical Center, Nashville, TN



Association of Community Cancer Centers

BACKGROUND

The number of older adults diagnosed with cancer is steadily rising, and measures for equitable, high-quality care in oncology are relatively undefined. The Association of Community Cancer Centers (ACCC), in collaboration with the Institute for Healthcare Improvement (IHI), led the first oncology-focused cohort guided by the 4Ms Framework for Age-Friendly Health Systems.

METHODS

Representatives from 22 cancer programs across the US formed the Oncology Action Community to collaborate on implementing a framework that provides optimal care for the older adult population. This was done through:

1. A six-part didactic webinar series led by subject matter experts in geriatric oncology to apply the 4Ms model: What Matters, Mobility, Mentation, and Medication.
2. An evaluation of the cancer program's alignment with current standards using the ACCC Geriatric Gap Assessment tool and IHI's 4Ms Care Description.
3. Peer-to-peer coaching calls with faculty and participants to help implement the framework.

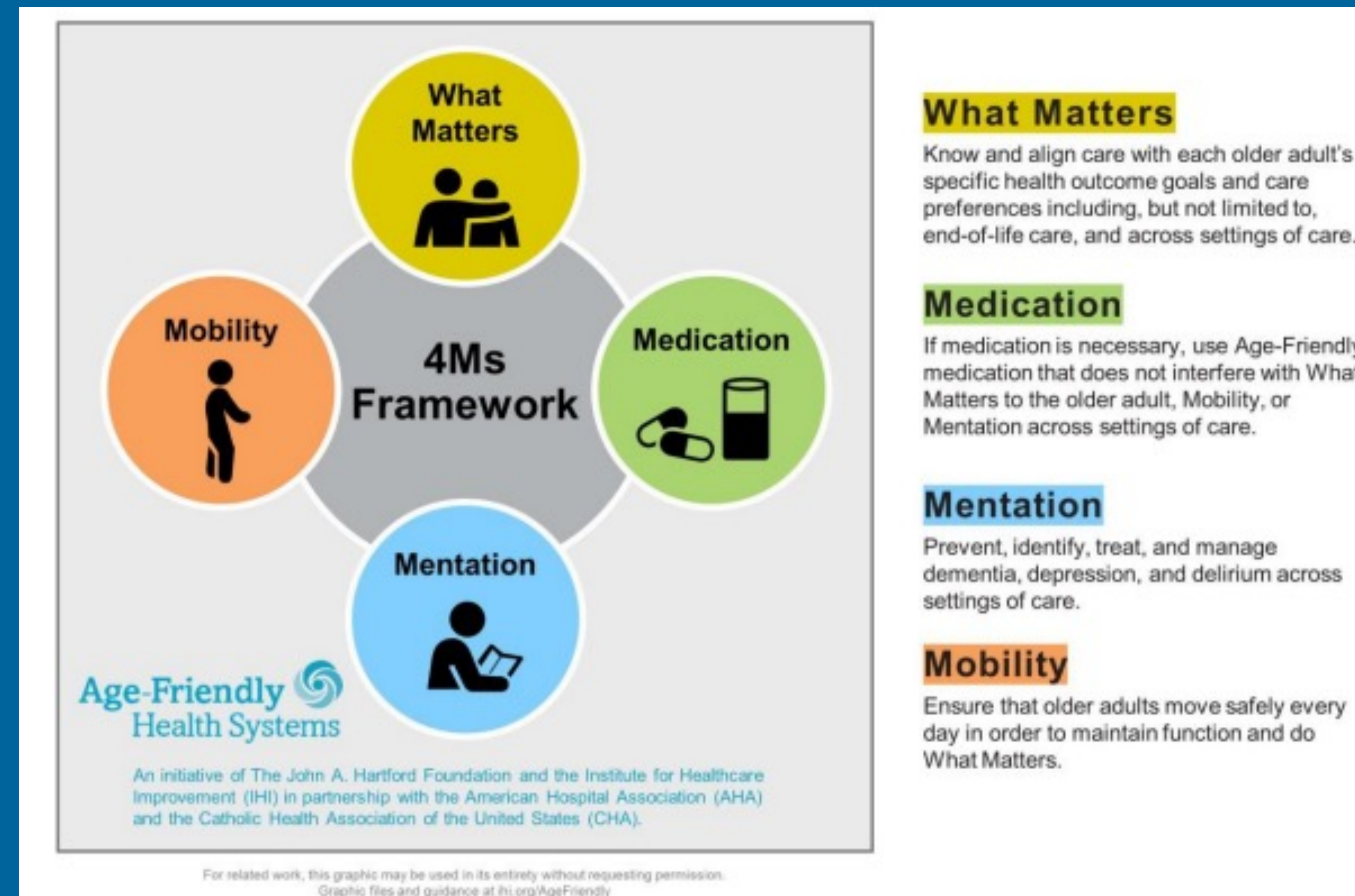
ACKNOWLEDGMENT

ACCC would like to thank the Institute for Healthcare Improvement (IHI) for their support and contributions to this important program.



This program is made possible by support from The John A. Hartford Foundation.

The first oncology-focused, Age-Friendly Health Systems action community helped 22 cancer programs implement the 4Ms framework to organize care and focus on the older adult's wellness and strengths rather than solely on disease.



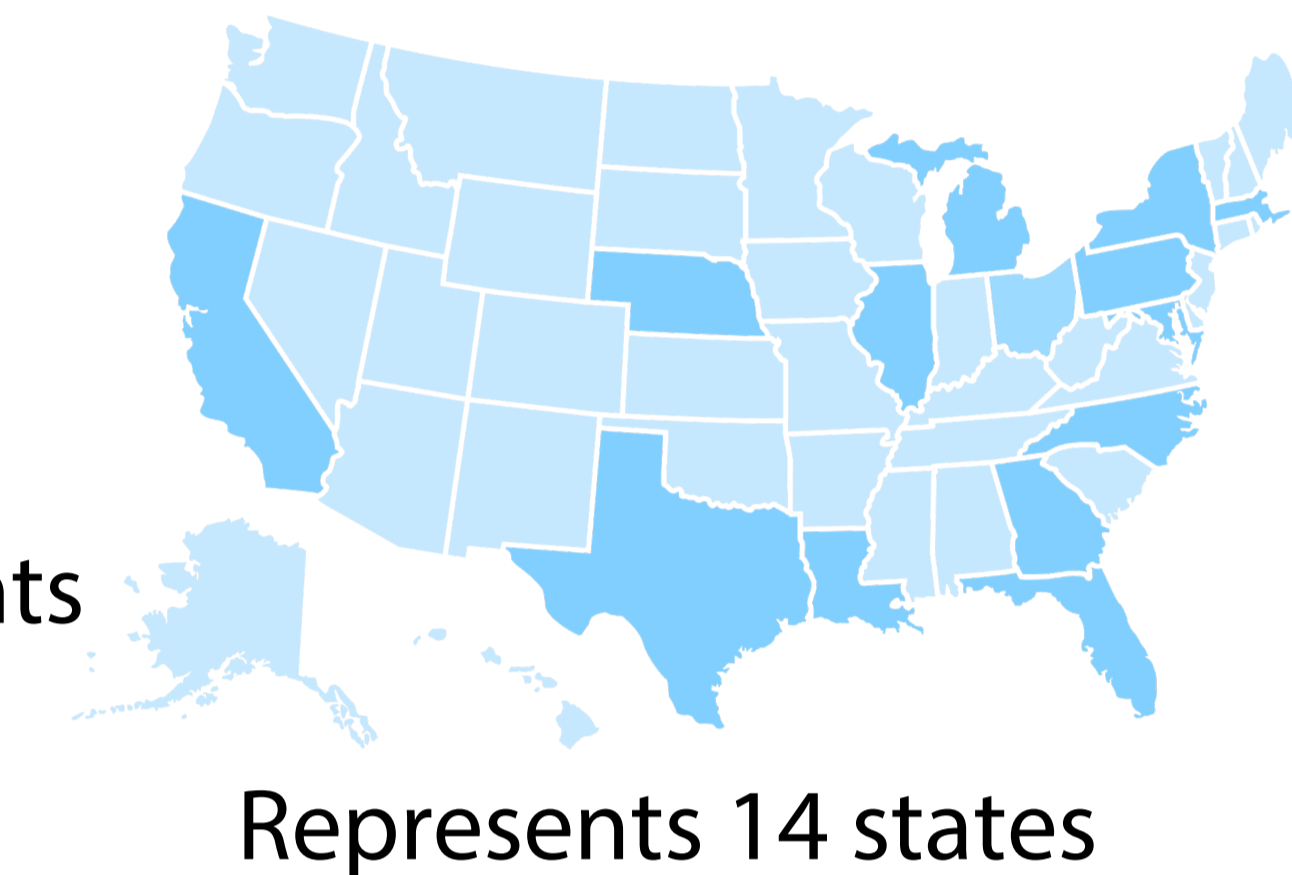
RESULTS

Who was part of the First Oncology Action Community?

22 cancer programs enrolled

Exceeded goal by 120%

30 lead participants & 47 additional stakeholders



What levels of recognition were achieved?

6 sites have achieved Level 1: Age-Friendly Health System Participant

6 additional sites have achieved Level 2: Age-Friendly Health System – Committed to Care Excellence

What were the key learnings?

- 90% of participants from the multidisciplinary cancer team found medication the most challenging "M" to implement.
- Periodic site check-in's from ACCC kept participants on track to complete the Cares Description provided by IHI to receive Age-Friendly recognition at their health system.
- Pre-call preparation for participants increased engagement and breadth of topics discussed.



Tampa, FL • November 8-12



The ACCC Age-Friendly Health Systems: Oncology Action Community program page can be accessed through the QR code.

AUTHOR CONTACT INFORMATION

Bianca Alvarez, MPH
Association of Community Cancer Centers,
balvarez@acc-cancer.org