

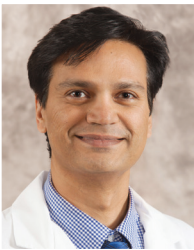


FLORIDA HOSPITAL
CANCER INSTITUTE

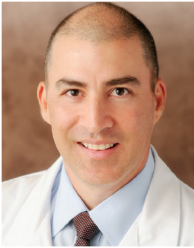
To refer a patient, please contact us at:



Johnny Ray Bernard, MD
Florida Hospital Deland
680 Peachwood Dr.,
DeLand, FL 32720
Office Phone: (386) 943-7160
Fax: (386) 738-6824



Irfam Ahmed, MD
Florida Hospital Fish Memorial
1055 Saxon Blvd.,
Orange City, FL 32763
Office Phone: (386) 917-5526
Office Fax: (386) 917-5553



Luis Carrascosa, MD
Florida Hospital Flagler
60 Memorial Medical Pkwy.
Ste 1-700
Palm Coast, FL 32164
Office Phone: (386) 586-2060
Fax: (386) 586-4659



Shravan Kandula, MD
Florida Hospital Memorial Medical Center
224 Memorial Medical Pkwy.
Daytona Beach, FL 32117
Office Phone: (386) 231-4000
Fax: (386) 231-4001



Margarita Racsa, MD
Florida Hospital Memorial Medical Center
224 Memorial Medical Pkwy.
Daytona Beach, FL 32117
Office Phone: (386) 231-4000
Fax: (386) 231-4001

EXPERT CANCER CARE



CLOSE TO  HOME



FLORIDA HOSPITAL
CANCER INSTITUTE

FHD-16-16126

Expert Radiation Oncologists

Our physicians provide revolutionary therapies aimed at slowing, reducing or eliminating a wide variety of cancers and reducing the risk that a cancer will return following surgery or chemotherapy. Our doctors have extensive training in all types of cancer, including, but not limited to:

- Brain
- Breast
- Lung
- CNS (Central Nervous System)
- GI (Gastrointestinal)
- Skin
- Gynecologic
- Prostate

Treatment Planning Review

In addition to extensive training, our radiation oncologists are members of a regional group with access to sub-specialized trained physicians. They meet regularly to review and discuss treatment plans for patients.

24/7 Physician Call Coverage

Our physicians are accessible and available to assist with your patient's needs.

Technology

At Florida Hospital, we offer precise, non-invasive, state-of-the-art radiation delivery systems that allow us to give higher doses to tumors without affecting surrounding healthy tissue.

SBRT (Stereotactic Body Radiation Therapy)

- Precisely targeted radiation which reduces treatments to 5 or less for most early stage lung cancer or prostate patients

Hypofractionated Treatments

- Significantly reduces number of radiation treatments for most disease sites

4D CT

- Accounts for movement of tumor during treatment

Cone beam CT

- Important tool for daily patient positioning during treatment

IMRT

- Delivers precise radiation to tumor site and protects healthy tissue



Compassionate Care

Although Florida has the third highest rate of new cancer patients in the nation, it's comforting to know that we are here to help take care of all the details and keep your patients on track with their treatment plans and recovery.

Our Cancer Centers provide several resources which include:

Nurse Navigators

- Serves as a single point of contact
- Guides patients from prevention to early detection, diagnosis to treatment
- Educates your patients about the details of their treatment plans and what to expect throughout the course of their therapy

Oncology Social Worker

- Provides information on cancer resources and medical insurance coverage
- Assists patients and family to cope with diagnosis

Cancer Support Groups

Financial Assistance available to assist uninsured and under-insured patients

Resource Center

- Educational literature, wigs and other accessories available to cancer patients

All of the resources listed above are not insurance driven and available to all oncology patients.