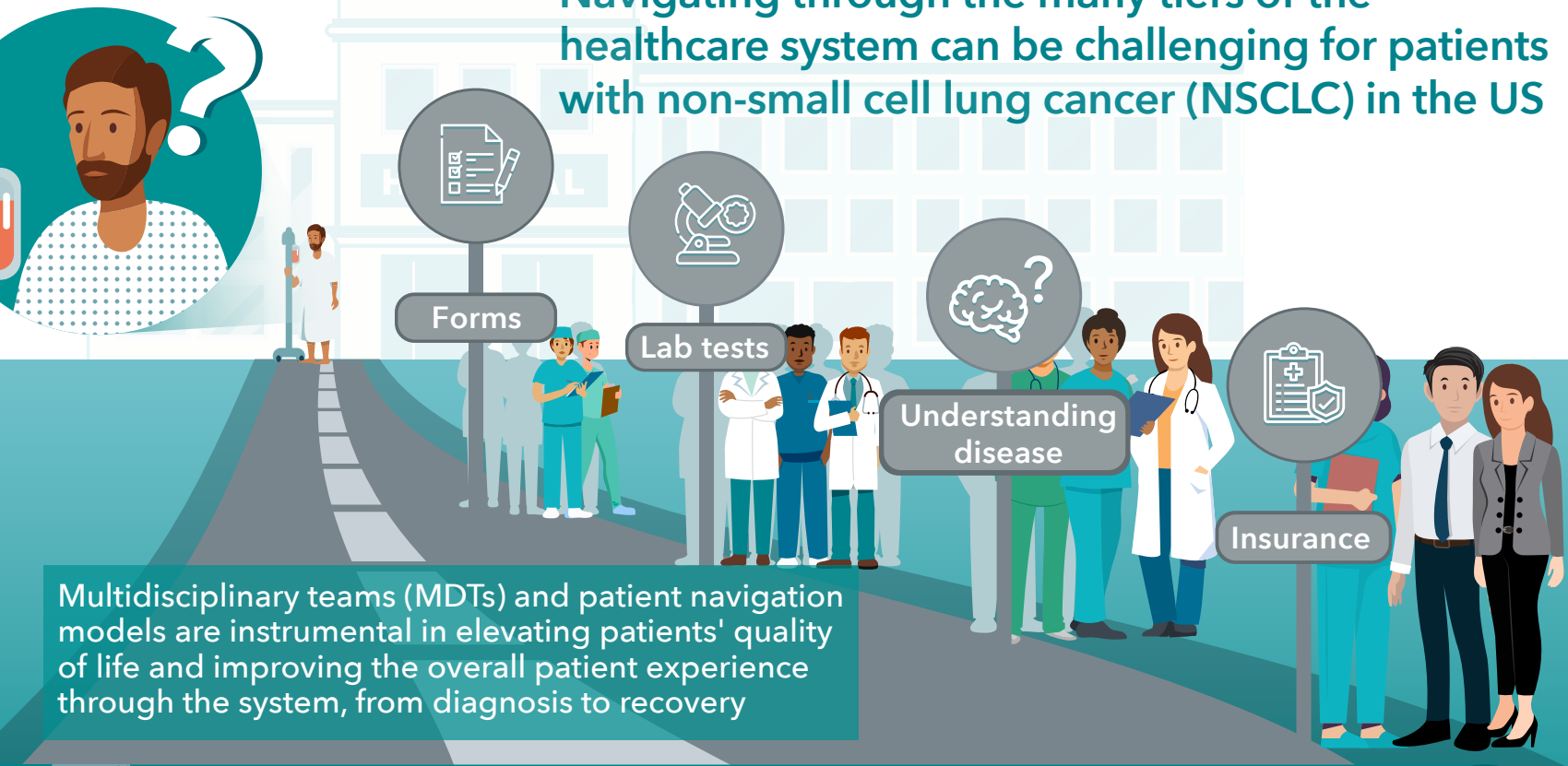
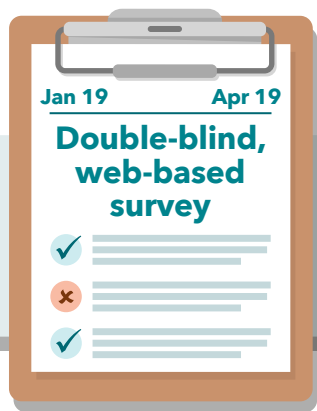


How Patient Navigation Models in Non-Small Cell Lung Cancer Care Programs in the US Can Be Improved

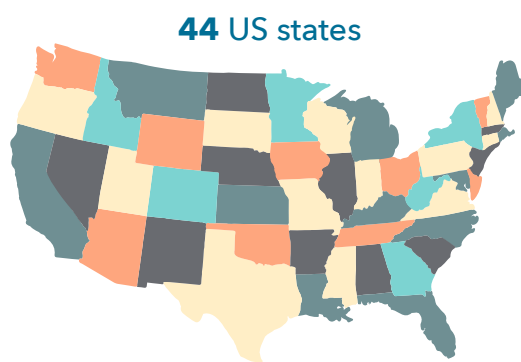
Navigating through the many tiers of the healthcare system can be challenging for patients with non-small cell lung cancer (NSCLC) in the US



A National Quality Survey asked, "how effective are patient navigation models in NSCLC care programs in the US?"



MDT members in NSCLC care programs



44 US states

160 Unique cancer programs

639 Complete respondents

75 Oncology nurses (12%)

33 patient navigators (5%)

Survey responses show:

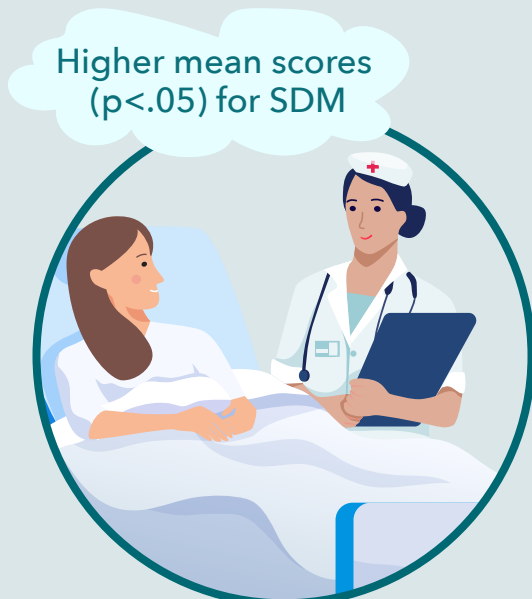
Significant shortage of navigators across cancer programs to assist patients with NSCLC:

22% of respondents reported **no nurse or lay navigator** in their program

90% of respondents worked in programs with no formal health literacy assessments for patients with NSCLC

Programs with navigators for patients with NSCLC **better promoted** and **coordinated shared decision-making (SDM) practices**

Higher mean scores ($p < .05$) for SDM



Patient navigation services are instrumental in improving the patient experience and patient outcomes in NSCLC, and their implementation must be expanded to maximize patient benefits in advanced stage NSCLC

acc-cancer.org/NSCLC-navigation